

TECHNICAL MANUAL

**UNIT, DIRECT SUPPORT AND GENERAL SUPPORT MAINTENANCE
REPAIR PARTS AND SPECIAL TOOLS LIST**

**PUMP UNIT, FLAMMABLE LIQUID, CENTRIFUGAL,
SELF-PRIMING, 2 INCH, 100 GPM,
DIESEL ENGINE DRIVEN
NSN 4320-01-307-0538**

DISTRIBUTION STATEMENT A: Approved for public release, distribution is unlimited

**HEADQUARTERS, DEPARTMENT OF THE ARMY
30 APRIL 1993**

TECHNICAL MANUAL

**UNIT, INTERMEDIATE DIRECT SUPPORT AND GENERAL SUPPORT
MAINTENANCE REPAIR PARTS AND SPECIAL TOOLS LIST**

for

**PUMP UNIT, FLAMMABLE LIQUID, CENTRIFUGAL, SELF-PRIMING,
2 INCH, 100 GPM, DIESEL ENGINE DRIVEN
NSN 4320-01-307-0538**

Current as of March 1993

REPORTING ERRORS AND RECOMMENDING IMPROVEMENTS

You can help improve this manual. If you find any mistakes or if you know of a way to improve the procedures, please let us know. Mail your letter, DA Form 2028 (Recommended Changes to Publications and Blank Forms), or DA Form 2028-2 located in the back of this manual direct to: Commander, US Army Aviation and Troop Command, ATTN: AMSAT-I-MP, 4300 Goodfellow Blvd., St. Louis, MO 63120-1798. A reply will be furnished directly to you.

DISTRIBUTION STATEMENT A: Approved for public release; distribution is unlimited.

TABLE OF CONTENTS

	Page	Illus/ Figure
Section I. INTRODUCTION	1	
Section II. REPAIR PARTS LIST	1-1	
Group 01 Pump Assembly	1-1	1
Group 02 Air Filter Assembly	2-1	2
Group 03 Engine Assembly	3-1	3
Group 04 Fuel System.....	4-1	4
Fuel Lift Pump	5-1	5
Injection System.....	6-1	6
Group 05 Exhaust System	7-1	7
Group 06 Cranking System.....	8-1	8

TABLE OF CONTENTS (Continued)

	Page	Illus/ Figure
Group 07	Throttle Linkage9-1	9
Group 08	Cylinder Head and Cylinder Assembly	
	Cowling and Covers 10-1	10
	Cylinder Head Cover and Push Rods 11-1	11
	Cylinder Head and Valves..... 12-1	12
	Cylinder and Piston 13-1	13
Group 09	Crankcase Assembly	
	Connecting Rod 14-1	14
	Timing Cover and Camshaft 15-1	15
	Governor..... 16-1	16
	Flywheel and Oil Seal 17-1	17
	Crankshaft. 18-1	18
	Crankcase 19-1	19
Group 10	Frame Assembly20-1	20
Group 11	Bulk MaterialsBULK-1	BULK
Section III.	SPECIAL TOOLS LIST	
	Special Tools21-1	21
Section IV.	CROSS-REFERENCE INDEXES	
	National Stock Number Index.....I-1	
	Part Number IndexI-3	
	Figure and Item Number Index.....I-11	

**UNIT, DIRECT SUPPORT AND GENERAL SUPPORT
MAINTENANCE REPAIR PARTS AND SPECIAL TOOLS LIST**

SECTION I. INTRODUCTION

1. SCOPE. This RPSTL lists and authorizes spares and repair parts, special tools, special test, measurement, and diagnostic equipment (TMDE); and other special support equipment required for performance of unit, direct support, and general support maintenance of the Pump Unit, 100 GPM, Diesel Engine Driven It authorizes the requisitioning, issue, and disposition of spares, repair parts and special tools as indicated by the source, maintenance and recoverability (SMR) codes.

2. GENERAL. In addition to this section, Introduction, this Repair Parts and Special Tools List is divided into the following sections:

a. Section II Repair Parts List. A list of spares and repair parts authorized by this RPSTL for use in the performance of maintenance This list also includes parts which must be removed for replacement of the authorized parts. Parts lists are composed of functional groups in ascending alphanumeric sequence, with the parts in each group listed in ascending figure and item number sequence. Bulk materials are listed in item name sequence. Repair parts kits are listed separately in their own functional group within Section II. Repair parts for repairable special tools are also listed in this section. Items are shown in the associated illustration(s)/figure(s)

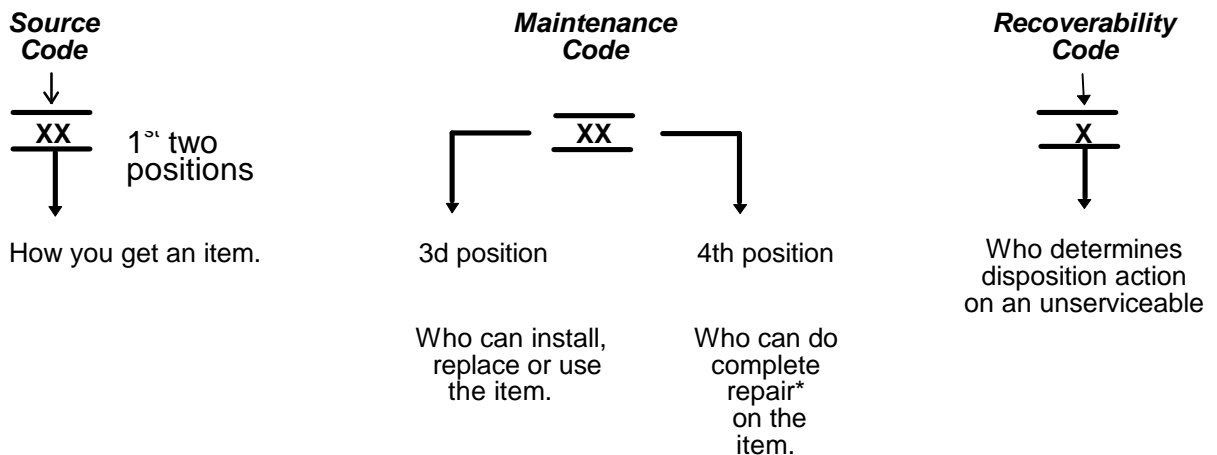
b. Section III. Special Tools List. A list of special tools, special TMDE, and other special support equipment authorized by this RPSTL (as indicated by Basis of Issue (BOI) Information in DESCRIPTION AND USABLE ON CODE column) for the performance of maintenance.

c. Section IV Cross-references Indexes. A list, in National item Identification Number (NIIN) sequence, of all National stock numbered items appearing in the listing, followed by a list in alphanumeric sequence of all part numbers appearing in the listings. National stock numbers and part numbers are cross referenced to each illustration figure and item number appearance. The figure and item number index lists figure and item number in alphanumeric sequence and cross references NSN, CAGEC and part number.

3. EXPLANATION OF COLUMNS (SECTION II AND SECTION III).

a. ITEM NO (Column (1)). Indicates the number used to identify items called out in the illustration.

b. SMR Code (Column (2)). The Source, Maintenance, and Recoverability (SMR) code is a 5-position code containing supply/requisitioning information, maintenance category authorization criteria, and disposition instruction, as shown in the following breakout:



*Complete Repair: Maintenance capacity, capability, and authority to perform all corrective maintenance tasks of the "Repair" function in a use/user environment in order to restore serviceability to a failed item.

(1) Source Code. The source code tells you how to get an item needed for maintenance, repair, or overhaul of an end item/equipment. Explanations of source codes follows:

Source Code	Explanation
PA PB PC** PD PE PF PG	<p>Stocked items; use the applicable NSN to request(requisition items with these source codes. They are authorized to the category indicated by the code entered in the 3rd position of the SMR code.</p> <p>**NOTE: Items coded PC are subject to deterioration.</p> <p>Items with these codes are not to be requested/requisitioned individually. They are part of a kit which is authorized to the maintenance category indicated in the 3rd position of the SMR code. The complete kit must be requisitioned and applied.</p>
KD KF KB	
MO- (Made at Unit/AVUM Level) MF- (Made at DS/AVUM Level) MH- (Made at GS Level) ML- (Made at Specialized Repair Activity (SRA)) MD- (Made at Depot)	<p>Items with these codes are not to be requested/requisitioned individually. They must be made from bulk material which is identified by the part number in the DESCRIPTION and USABLE ON CODE (UOC) column and listed in the Bulk Material group of the repair parts list in this RPSTL. H the item is authorized to you by the 3rd position code of the SMR code, but the source code indicates it is made at a higher level, order the item from the higher level of maintenance.</p>
AO- (Assembled by Unit/AVUM Level) AF- (Assembled by DS/AVIM Level) AH- (Assembled by GS Category) AL- (Assembled by SRA) AD- (Assembled by Depot)	<p>Items with these codes are not to be requested/ requisitioned individually. The puts that make up the assembled item must be requisitioned or fabricated and assembled at the level of maintenance indicated by the source code. H the 3rd position code of the SMR code authorizes you to replace the item, but the source code indicates the items are assembled at a higher level, order the item from the higher level of maintenance.</p>
XA-	Do not requisition "XA"-coded item. Order its next higher assembly. (Refer to the NOTE below.)
XB-	If an "UXB" item is not available from salvage, order it using the CAGEC and part number given.
XC-	Installation drawing, diagram, instruction sheet, field service drawing, that is identified manufacturer's part number.
XD-	Item is not stocked. Order an "XD"-coded item through normal supply channels using the CAGEC and part number given, if no NSN is available.

NOTE

Cannibalization or controlled exchange, when authorized, may be used as a source of supply for items with the above source codes, except for those source coded "XA" or those aircraft support items restricted by requirements of AR 750-1

(2) Maintenance Code. Maintenance codes tell you the level(s) of maintenance authorized to USE and REPAIR support items The maintenance codes are entered in the third and fourth positions of the SMR code as follows

(a) The maintenance code entered in the third position tells you the lowest maintenance level authorized to remove, replace, and use an item. The maintenance code entered in the third position will Indicate authorization to the following levels of maintenance

MAINTENANCE

Code	Application/Explanation
C -	Crew or operator maintenance done within unit/AVUM
O -	Unit/AVUM can remove, replace, and use the item
F -	Direct support/AVIM maintenance can remove, replace, and use the item
H -	General support maintenance can remove, replace, and use the item
L -	Specialized repair activity can remove, replace, and use the item
D -	Depot can remove, replace, and use the item

(b) The maintenance code entered in the fourth position tells whether or not the item is to be repaired and identifies the lowest maintenance level with the capability to do complete repair (i e., perform all authorized repair functions)

NOTE

Some limited repair may be done on the item at a lower level of maintenance, if authorized by the Maintenance Allocation Chart and SMR codes.

Maintenance

Code	Application/Explanation
O -	Unit or (aviation unit) is the lowest level that can do complete repair of the item.
F -	Direct support or aviation intermediate is the lowest level that can do complete repair of the item
H -	General Support is the lowest level that can do complete repair of the item.
L -	Specialized repair activity is the lowest level that can do complete repair of the item.
D -	Depot is the lowest level that can do complete repair of the item.
Z -	Nonreparable. No repair is authorized.
B -	No repair Is authorized No parts or special tools are authorized for the maintenance of a "B"coded item. However, the item may be reconditioned by adjusting, lubricating, etc., at the user level.

(3) Recoverability Code. Recoverability codes are assigned to items to indicate the disposition action on unserviceable items The recoverability code is entered in the fifth position of the SMR Code as follows:

**Recoverability
Codes**

Application/Explanation

- Z - Nonreparable item. When unserviceable, condemn and dispose of the item at the level of maintenance shown in 3d position of SMR Code.
- O - Reparable item. When not economically repairable, condemn and dispose of the item at unit or AVUM level.
- F - Reparable item. When uneconomically repairable, condemn and dispose of the item at the direct support or AVIM level.
- H - Reparable item. When uneconomically repairable, condemn and dispose of the item at the general support level.
- D - Reparable item. When beyond lower level repair capability, return to depot. Condemnation and disposal of item not authorized below depot level.
- L - Reparable item. Condemnation and disposal not authorized below specialized repair activity (SRA).
- A - Item requires special handling or condemnation procedures because of specific reasons (e.g., precious metal content, high dollar value, critical material, or hazardous material). Refer to appropriate manuals/directives for specific instructions.

c. CAGEC (Column (3)). The Commercial and Government Entity Code (CAGEC) is a 5-digit numeric code which is used to identify the manufacturer, distributor, or Government agency/activity that supplies the item.

d. PART NUMBER (Column (4)). Indicates the primary number used by the manufacturer, (Individual, company, firm, corporation, or Government activity), which controls the design and characteristics of the item by means of its engineering drawings, specifications, standards, and inspection requirements to identify an item or range of items.

NOTE

When you use an NSN to requisition an item, the item you receive may have a different part number from the number listed.

e. DESCRIPTION AND USABLE ON CODE (UOC) (Column (5)). This column includes the following information:

(1) The Federal item name and, when required, a minimum description to identify the item.

(2) Part numbers of bulk materials are referenced in this column in the line entry to be manufactured/fabricated.

(3) The statement "END OF FIGURE" appears just below the last item description in Column 5 for a given figure in both Section II and Section III.

f. QTY (Column (6)). The QTY (quantity per figure) column indicates the quantity of the item used in the breakout shown on the illustration/figure, which is prepared for a functional group, subfunctional group, or an assembly. A "V" appearing in this column instead of a quantity indicates that the quantity is variable and may vary from application to application.

4. EXPLANATION OF INDEX FORMAT AND COLUMNS (SECTION IV).

a. NATIONAL STOCK NUMBER (NSN) INDEX.

(1) STOCK NUMBER column. This column lists the NSN by national item identification number (NIIN) sequence. The NIIN consists of the last nine digits of the NSN, i.e.

NSN
5305-01-574-1467
NIIN

When using this column to locate an item, ignore the first four digits of the NSN. Use the complete NSN (13 digits) when requisitioning items by stock number.

(2) FIG column. This column lists the number of the figure where the item is identified/located. The figures are in numerical order in Section II and Section III.

(3) ITEM column. The item number identifies the item associated with the figure listed in the adjacent FIG. column. This item is also identified by the NSN listed on the same line.

b. PART NUMBER INDEX. Part numbers in this index are listed by part number in ascending alphanumeric sequence (i.e., vertical arrangement of letter and number combination which places the first letter or digit of each group in order A through Z, followed by the numbers 0 through 9 and each following letter or digit in like order).

(1) CAGEC column. The Commercial and Government Entity Code (CAGEC) is a 5-digit numeric code used to identify the manufacturer, distributor, or Government agency/activity that supplies the item.

(2) PART NUMBER column. Indicates the primary number used by the manufacturer (Individual, firm, corporation, or Government activity), which controls the design and characteristics of the item by means of its engineering drawings, specifications, standards, and inspection requirements to identify an item or range of items.

(3) STOCK NUMBER column. This column lists the NSN for the associated part number and manufacturer identified in the PART NUMBER and CAGEC columns to the left.

(4) FIG. Column. This column lists the number of the figure where the item is identified/located in Section II and Section III.

(5) ITEM column. The item number is that number assigned to the item as it appears in the figure referenced in adjacent figure number column.

c. FIGURE AND ITEM NUMBER INDEX.

(1) FIG column. This column lists the number of the figure where the item is identified/located in Section II and Section III.

(2) ITEM column. The item number is that number assigned to the item as it appears in the figure referenced in the adjacent figure number column.

(3) STOCK NUMBER column. This column lists the NSN for the item.

(4) CAGEC column. The Commercial and Government Entity Code (CAGEC) is a 5-digit numeric code used to identify the manufacturer, distributor, or Government agency/activity that supplies the item.

(5) PART NUMBER column. Indicates the primary number used by the manufacturer (individual, firm, corporation, or Government activity), which controls the design and characteristics of the item by means of its engineering drawings, specifications standards, and inspection requirements to Identify an item or range of items.

5. SPECIAL INFORMATION

a. USABLE ON CODE. The usable on code appears in the lower corner of the Description Column heading Usable on codes are shown as "UOC: " in the Description Column (justified left) on the last line of the applicable item description/nomenclature. Uncoded items are applicable to all models.

b. FABRICATION INSTRUCTIONS. Bulk materials required to manufacture items are listed in the Bulk Material Functional Group of this RPSTL Part numbers for bulk materials are also referenced in the description column of the line entry for the item to be manufactured/fabricated Detailed fabrication Instructions for the items source coded to be manufactured or fabricated are found in TM 10-4320-310-14

c. INDEX NUMBERS. Items which have the work BULK in the figure column will have an index number shown in the item number column This Index number is a cross-reference between the National Stock Number/Part Number Index and the bulk material list in Section II.

d. ASSOCIATED PUBLICATIONS. The publications listed below pertains to the Pump Unit, 100 GPM, Diesel Engine Driver and Its components.

<u>Publication</u>	<u>Short Title</u>
TM 10-4320-310-14	Pump Unit, 100 GPM, Diesel Engine Driver

6. HOW TO LOCATE REPAIR PARTS

a When National Stock Numbers or Part Numbers are NOT Known.

(1) First. Using the table of contents, determine the assembly or subassembly group to which the item belongs. This IS necessary since figures are prepared for assembly groups and subassembly groups, and listings are divided Into the same groups

(2) Second. Find the figure covering the assembly group or subassembly group to which the item belongs.

(3) Third. Identify the item on the figure and use the Figure and item Number Index to find the NSN.

b When National Stock Number or Part Number Is Known.

(1) First. Using the National Stock Numbers and Part Number Indexes find the pertinent National Stock Number or Part Number The NSN index Is in National Item Identification Number (NIIN) sequence (see c-4 a.) The part numbers in the Part Number index are listed in ascending alphanumeric sequence (see paragraph 4.b.) Both indexes cross-reference you to the illustration/figure and item number of the item you are looking for

(2) Second. Turn to the figure and item number, verify that the item is the one you are looking for, then locate the item number in the repair parts list for the figure.

7. ABBREVIATIONS Abbreviations used in this manual are listed in MIL-STD-1 2.

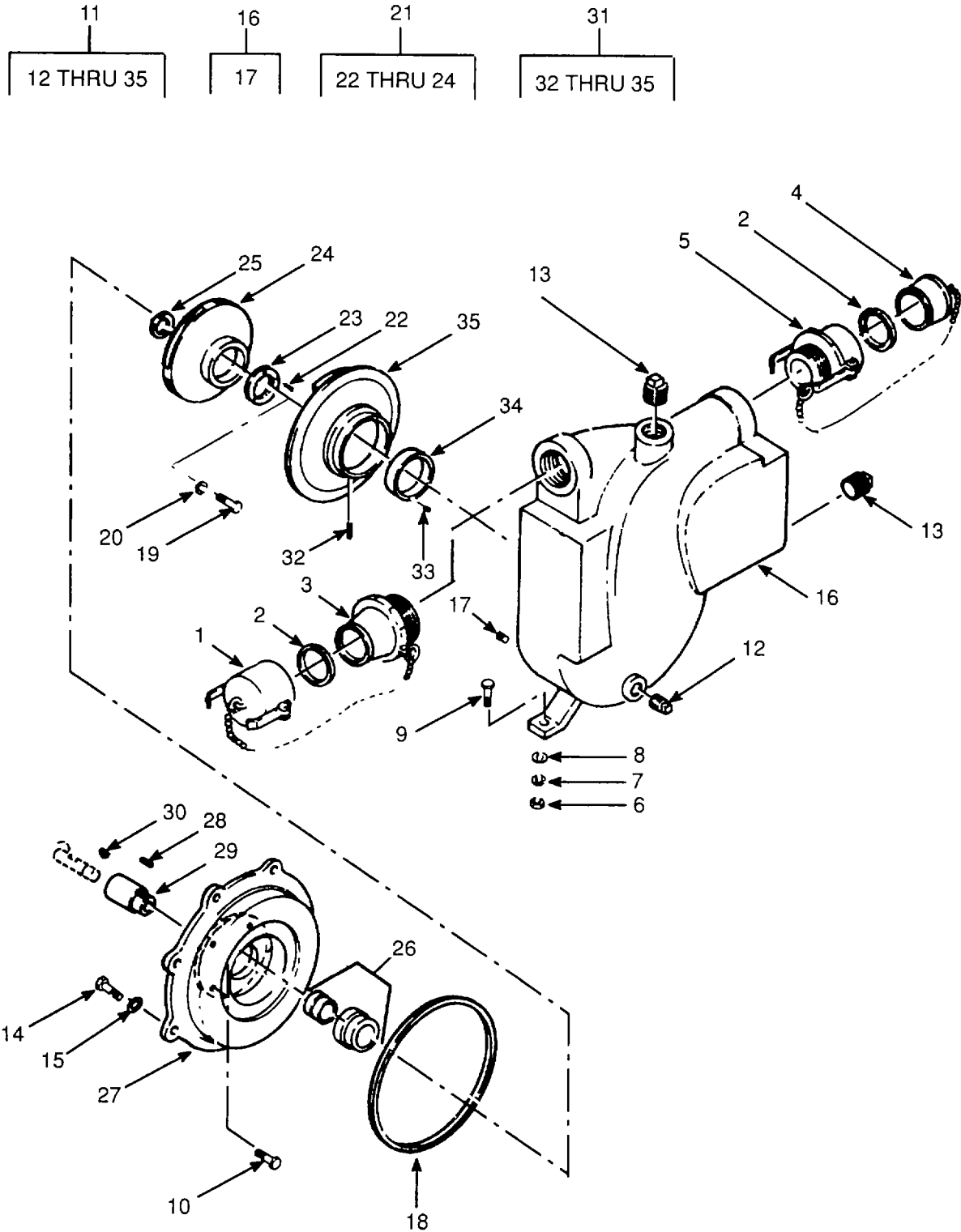


Figure 1. Pump Assembly.

SECTION II

TM 10-4320-310-24P

(1) ITEM NO	(2) SMR CODE	(3) CAGEC	(4) PART NUMBER	(5) DESCRIPTION AND USABLE ON CODES(UOC)	(6) QTY
-------------------	--------------------	--------------	-----------------------	---	------------

GROUP 01 PUMP ASSEMBLY

FIG. 1 PUMP ASSEMBLY

1	XDOZZ	96906	MS27028-11	CAP, QUICK DISCONN	1
2	PAOZZ	96906	MS27030-6	GASKET	2
3	XDOZZ	96906	MS27022-11	COUPLING HALF, QUICK	1
4	XDOZZ	96906	MS27029-11	PLUG, QUICK DISCONN	1
5	XDOZZ	96906	MS27026-11	COUPLING HALF, QUICK	1
6	PAOZZ	96906	MS51967-8	NUT, PLAIN	2
7	PAOZZ	96906	MS35338-46	WASHER, LOCK	2
8	PAOZZ	96906	MS27183-14	WASHER, FLAT	2
9	PAOZZ	96906	MS90725-64	SCREW, CAP, HEXAGON H	2
10	PAOZZ	96906	MS90726-33	BOLT, MACHINE	4
11	PAOFO	97403	13219E3949	PUMP, CENTRIFUGAL	1
12	XDOZZ	96906	MS20913-4	.PLUG, PIPE	1
13	PAOZZ	96906	MS20913-8	.PLUG, PIPE	2
14	XDOZZ	96906	MS90726-59	.SCREW, CAP, HEXAGON	8
15	PAOZZ	96906	MS27183-14	.WASHER, FLAT	8
16	PBOZZ	97403	1321E3948	.HOUSING, PUMP	1
17	PAOZF	96906	MS124698	..INSERT, SCREW THREAD	8
18	PAOZZ	96936	MS29513-270	.PACKING, PREFORMED	1
19	PAOZZ	96906	MS90726-34	.BOLT, MACHINE	1
20	PAOZZ	97403	13219E3937	.WASHER, IMPELLER	1
21	XDOZZ	97403	13219E3941	.IMPELLER ASSEMBLY, P	1
22	PAOZZ	96906	MS51021-23	..SETSCREW	3
23	XAOZZ	97403	13219E3939	..RING, WEARING	1
24	XAOZZ	97403	13219E3940	..IMPELLER, PUMP, CENTR	1
25	XDOZZ	97403	13228E3243	.SHIM, IMPELLER	V
26	PAOFZ	97403	13219E3942	.SEAL ASSEMBLY	1
27	XDOZZ	97403	13219E3944	.BACKHEAD	1
28	PAOZZ	96906	M520066-141	.KEY, MACHINE	1
29	PAOZZ	97403	13219E3943	.SHAFT, SHOULDERED	1
30	PAOZZ	96906	MS35756-34	.KEY, WOODRUFF	1
31	XAOOZ	97403	13219E3947	.DIFFUSER ASSY	1
32	PAOZZ	96906	MS51923-286	..PIN, SPRING	1
33	PAOZZ	96906	MS51021-32	..SETSCREW	2
34	PBOZZ	97403	13219E3945	..RING, WEARING	1
35	XAOZZ	97403	13219E3946	..DIFFUSER	1

END OF FIGURE

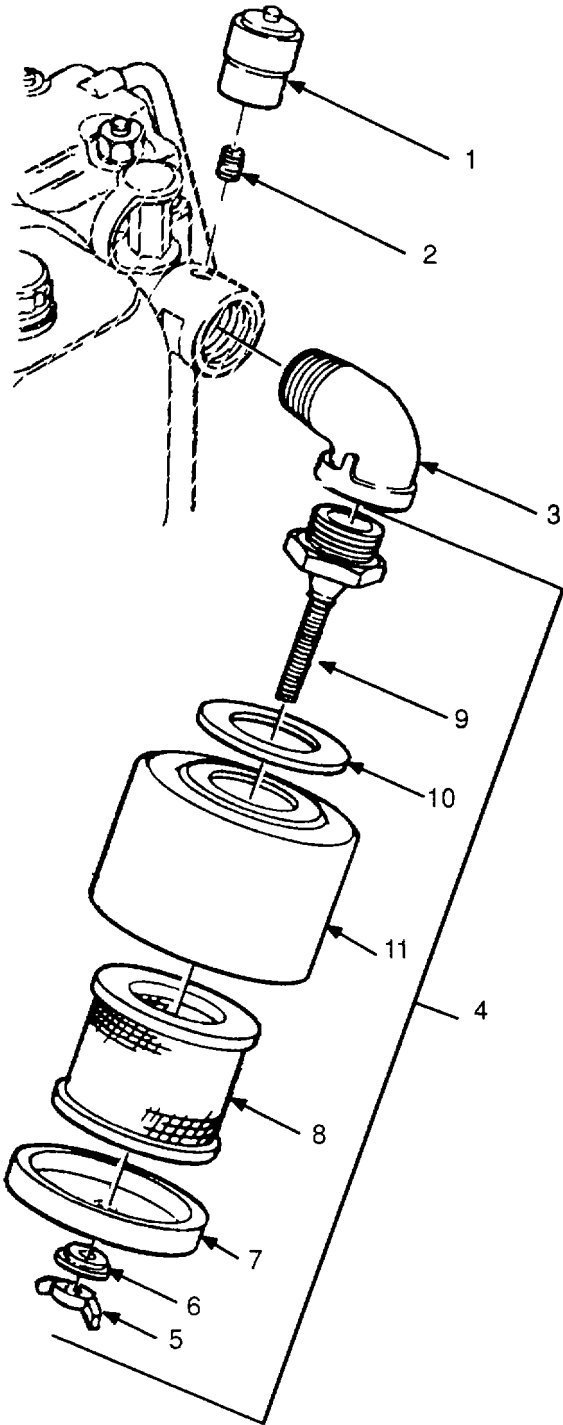


Figure 2. Air Filter Assembly.

SECTION II

TM 10-4320-310-24P

(1) ITEM NO	(2) SMR CODE	(3) CAGEC	(4) PART NUMBER	(5) DESCRIPTION AND USABLE ON CODES(UOC)	(6) QTY
GROUP 02 AIR FILTER ASSEMBLY					
FIG. 2 AIR FILTER ASSEMBLY					
1	PAOZZ	18265	RAX00-2350	INDICATOR, PRESSURE	1
2	XDOZZ	39428	4830K111	NIPPLE, PIPE	1
3	XDOZZ	13646	106.000.131	ELBOW, PIPE, STREET	1
4	XDOZZ	00736	204302	CLEANER, AIR	1
5	PAOZZ	00736	20515C	.NUT, WING	1
6	PAOZZ	00736	22852	.WASHER, SEALING	1
7	XDOZZ	00736	1NB-001	.TOP	1
8	PAOBZ	00736	1DM-007	.FILTER ELEMENT, INTA	1
9	XDOZZ	00736	12PGJW/STEM	.CONNECTOR, BASE	1
10	PAOZZ	00736	12B-006	.GASKET	1
11	XDOZZ	00736	204302-800	.COVER, ACCESS	1

END OF FIGURE

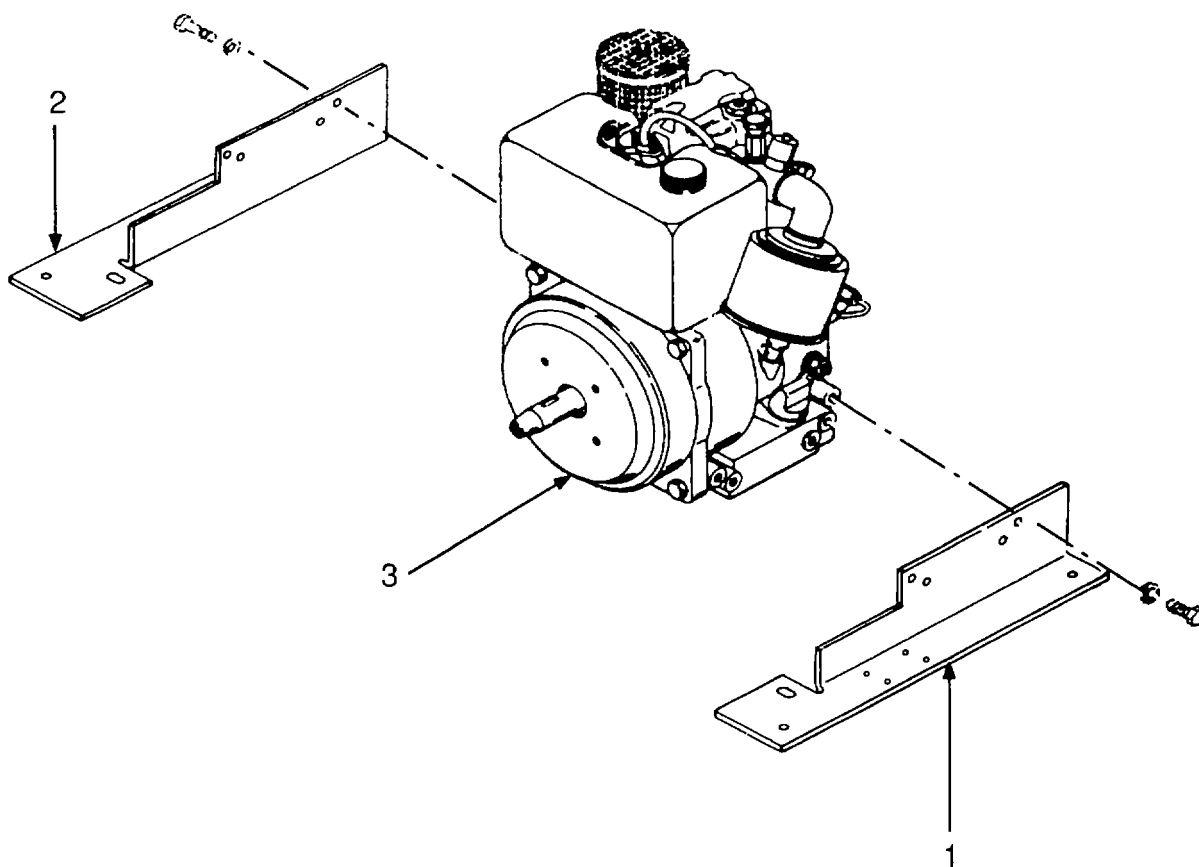


Figure 3. Engine Assembly

SECTION II

TM 10-4320-310-24P

(1) ITEM NO	(2) SMR CODE	(3) CAGEC	(4) PART NUMBER	(5) DESCRIPTION AND USABLE ON CODES(UOC)	(6) QTY
-------------------	--------------------	--------------	-----------------------	---	------------

GROUP 03 ENGINE ASSEMBLY

FIG. 3 ENGINE ASSEMBLY

1	XDOZZ	13646	119.000.474	BRACKET, MOUNTING LEFT SIDE	1
2	XDOZZ	13646	119.000.475	BRACKET, MOUNTING RIGHT SIDE	1
3	PBFHH	61080	E673LHK-241A	ENGINE ASSEMBLY	1

END OF FIGURE

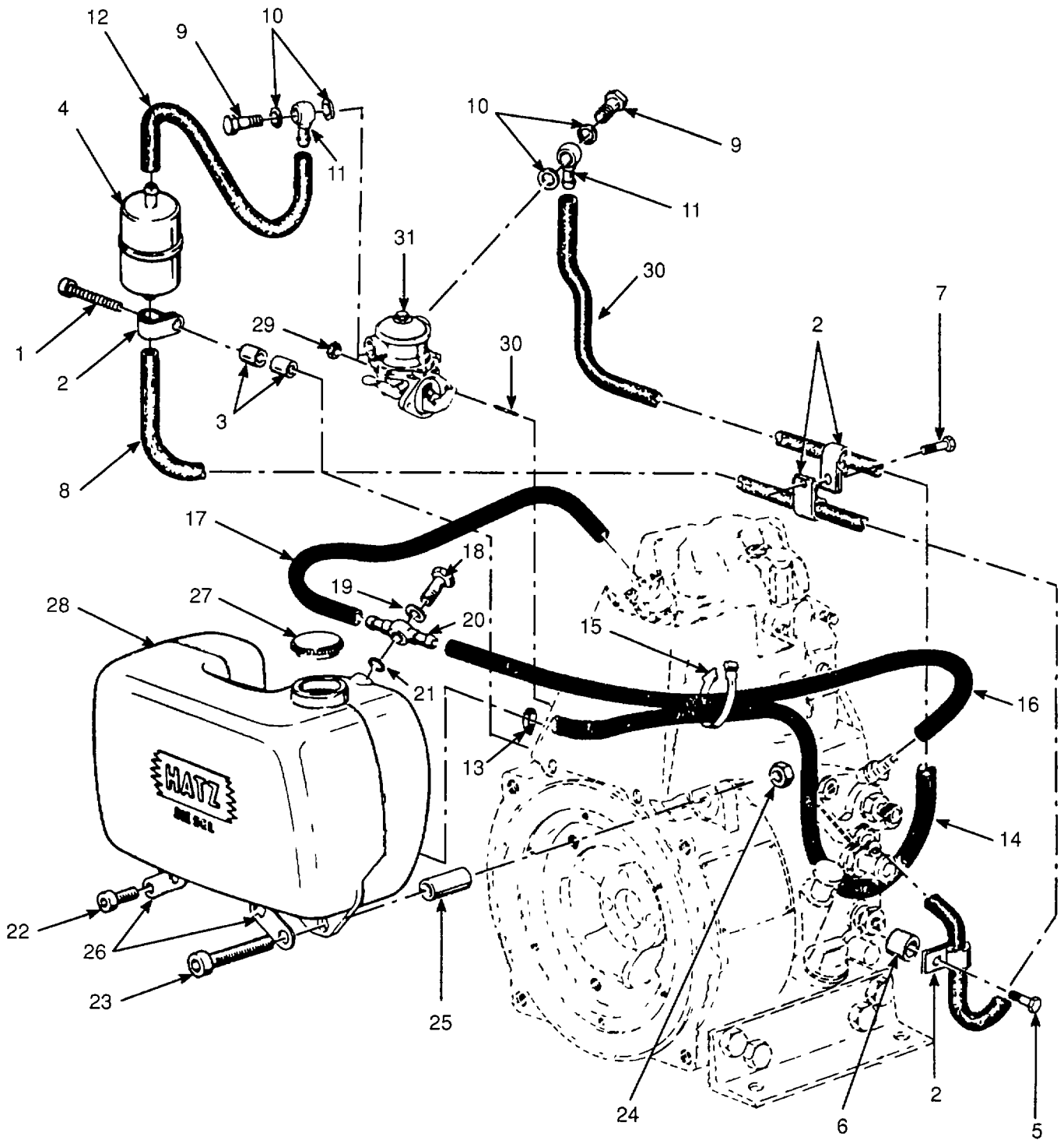


Figure 4. Fuel System.

SECTION II

TM 10-4320-310-24P

(1) ITEM NO	(2) SMR CODE	(3) CAGEC	(4) PART NUMBER	(5) DESCRIPTION AND USABLE ON CODES(UOC)	(6) QTY
GROUP 04 FUEL SYSTEM					
FIG. 4 FUEL SYSTEM					
1	PAOZZ	61080	50052700	.SCREW, HEX	1
2	XDOZZ	61080	03165500	.CLIP, PIPE	4
3	XDOZZ	61080	03520600	.SPACER.....	2
4	PAOZZ	61080	40089401	.FILTER, FUEL	1
5	PAOZZ	61080	50173100	.SCREW, HEX	1
6	XDOZA	61080	03292900	.SPACER, SLEEVE	1
7	PAOZZ	61080	50138900	.SCREW, CAP, HEXAGON	1
8	MOOZZ	61080	03525600	.HOSE, NONMETALLIC MAKE FROM P/N 03738100, LENGTH AS REQUIRED	1
9	XDOZZ	61080	50006400	.BOLT, BANJO	2
10	PAOZA	61080	50001200	.GASKET.....	4
11	XDOZZ	61080	50015900	.PIECE, RING	2
12	MOOZZ	61080	03493100	.HOSE, NONMETALLIC MAKE FROM P/N 03738100, LENGTH AS REQUIRED	1
13	PAOZZ	61080	40037300	.CLAMP	1
14	MOOZZ	61080	03674200	.HOSE, FUEL MAKE FROM P/N 03738100, LENGTH AS REQUIRED.....	1
15	PAOZZ	61080	40092700	.STRAP, RETAINING	1
16	MOOZZ	61080	03493600	.HOSE, NONMETALLIC MAKE FROM P/N 03738100, LENGTH AS REQUIRED	1
17	MOOZZ	61080	03493300	HOSE, NONMETALLIC MAKE FROM P/N 03738100, LENGTH AS REQUIRED	1
18	XDOZZ	61080	50169700	.BOLT, BANJO.....	1
19	PAOZZ	61080	50062400	.WASHER, SEALING	1
20	XDOZZ	61080	40093300	.PIECE, DOUBLE RING	1
21	PAOZZ	61080	50158300	.WASHER	1
22	XDOZZ	61080	50171500	.SCREW MACHINE	2
23	XDOZZ	61080	50171600	.SCREW MACHINE.....	2
24	XDOZZ	61080	40028400	.NUT, PLAIN, HEXAGON	2
25	XDOZZ	61080	03493000	.SPACER, SLEEVE.....	2
26	XDOZZ	61080	03525800	.BRACKET, MOUNTING	2
27	PBOZZ	61080	40032611	.CAP, FILLER OPENING	1
28	XDOZZ	61080	00691300	.TANK, FUEL	1
29	PAOZA	61080	40028300	.NUT, SELF-LOCKING, HE	2
30	PAOZZ	61080	50144300	.STUD, PLAIN ...	2
31	PAOFF	61080	50181400	.PUMP, FUEL, CAM ACTUA ..	1

END OF FIGURE

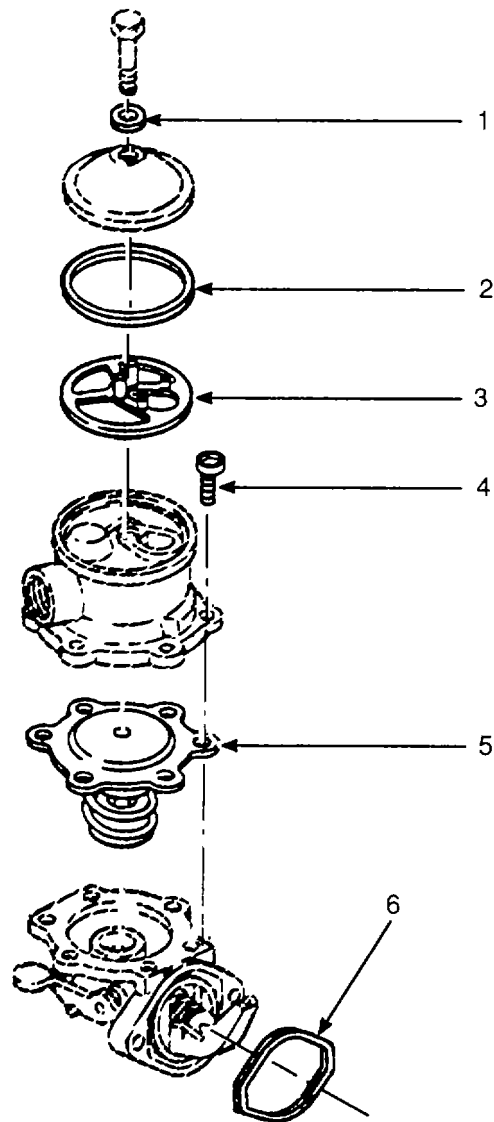


Figure 5. Fuel Lift Pump.

SECTION II

TM 10-4320-310-24P

(1) ITEM NO	(2) SMR CODE	(3) CAGEC	(4) PART NUMBER	(5) DESCRIPTION AND USABLE ON CODES(UOC)	(6) QTY
-------------------	--------------------	--------------	-----------------------	---	------------

GROUP 04 FUEL SYSTEM

FIG. 5 FUEL LIFT PUMP

1	PAFZZ	61080	49018500	..SCREW, ASSEMBLED WAS	1
2	PAFZZ	61080	49018400	..GASKET	1
3	PAFZZ	61080	49018300	..FILTER, FUEL.....	1
4	XDFZZ	61080	49018100	..SCREW, ALLEN.....	6
5	XDFZZ	61080	49018200	..DIAPHRAGM.....	1
6	PAFZZ	61080	50129900	..GASKET.....	1

END OF FIGURE

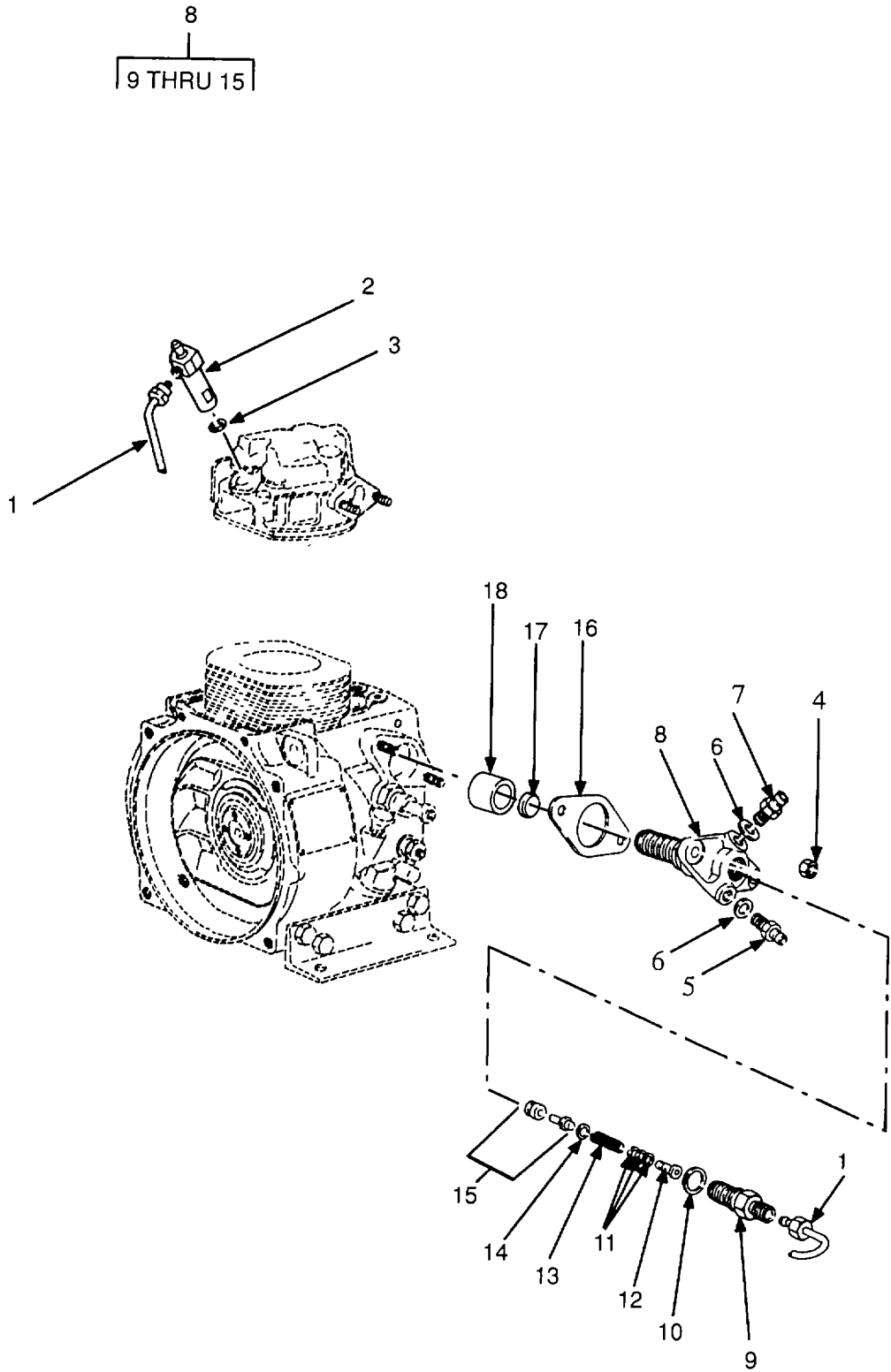


Figure 6. Injection System

SECTION II

TM 10-4320-310-24P

(1) ITEM NO	(2) SMR CODE	(3) CAGEC	(4) PART NUMBER	(5) DESCRIPTION AND USABLE ON CODES(UOC)	(6) QTY
GROUP 04 FUEL SYSTEM					
FIG. 6 INJECTION SYSTEM					
1	XDOZZ	61080	03405700	.TUBE AND FITTINGS, M	2
2	PAFZZ	61080	40006600	.INJECTOR ASSEMBLY, F	1
3	PAFZZ	61080	40003100	.WASHER, JOINT	1
4	PAFZZ	61080	50022900	.NUT, PLAIN, HEXAGON	2
5	XDFZZ	61080	03485000	.CONNECTOR, FLUID, PUM	1
6	PAFZA	61080	50001100	.GASKET	2
7	PAFZZ	61080	00671001	.VALVE, CHECK	1
8	PAFBZ	61080	40080201	.PUMP, INJECTION	1
9	XDFZZ	61080	49003100	..CONNECTOR	1
10	PAFZA	61080	49004700	..PACKING, PREFORMED	1
11	PAFZZ	61080	49004300	..SHIM	3
12	XDFZZ	61080	49003900	..PIECE, FILLING	1
13	XDFZZ	61080	49003700	..SPRING, VALVE	1
14	PAFZA	61080	49004400	..GASKET	1
15	XDFZZ	61080	49036900	..VALVE, DELIVERY	1
16	PAFZZ	61080	03209400	.SHIM .10 MM THICK	V
16	PAFZA	61080	03209500	.GASKET .15 MM THICK	V
16	PAFZA	61080	03209600	.GASKET .20 MM THICK	V
16	PAFZZ	61080	03209700	.SHIM .30 MM THICK	V
16	PAFZZ	61080	03209800	.SHIM .50 MM THICK	V
17	XDFZZ	61080	03062600	.SPACER	1
18	XDFZZ	61080	03064000	.TAPPET	1

END OF FIGURE

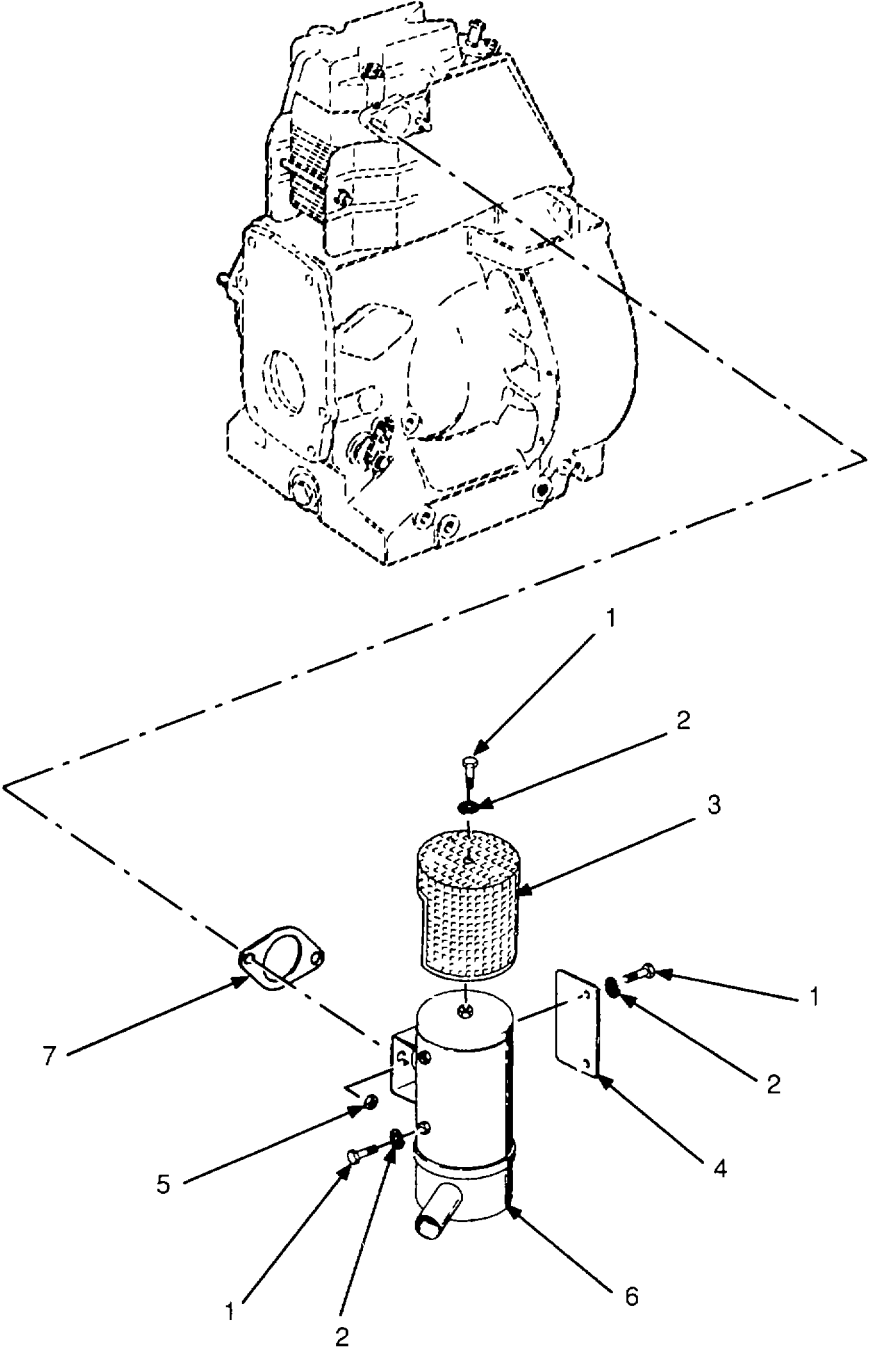


Figure 7. Exhaust System.

SECTION II

TM 10-4320-310-24P

(1) ITEM NO	(2) SMR CODE	(3) CAGEC	(4) PART NUMBER	(5) DESCRIPTION AND USABLE ON CODES(UOC)	(6) QTY
-------------------	--------------------	--------------	-----------------------	---	------------

GROUP 05 EXHAUST SYSTEM

FIG. 7 EXHAUST SYSTEM

1	PAOZZ	61080	50173100	.SCREW, HEX	5
2	XDOZZ	61080	50016800	.WASHER, LOCK	5
3	XDOZZ	61080	03899000	.GUARD, MUFFLER	1
4	XDOZZ	61080	03699700	.HEAT SHIELD	1
5	PAOZZ	61080	40081600	.NUT, HEXAGON	2
6	PAOZZ	61080	99400010	.MUFFLER, EXHAUST	1
7	PAOZZ	61080	50122400	.GASKET	1

END OF FIGURE

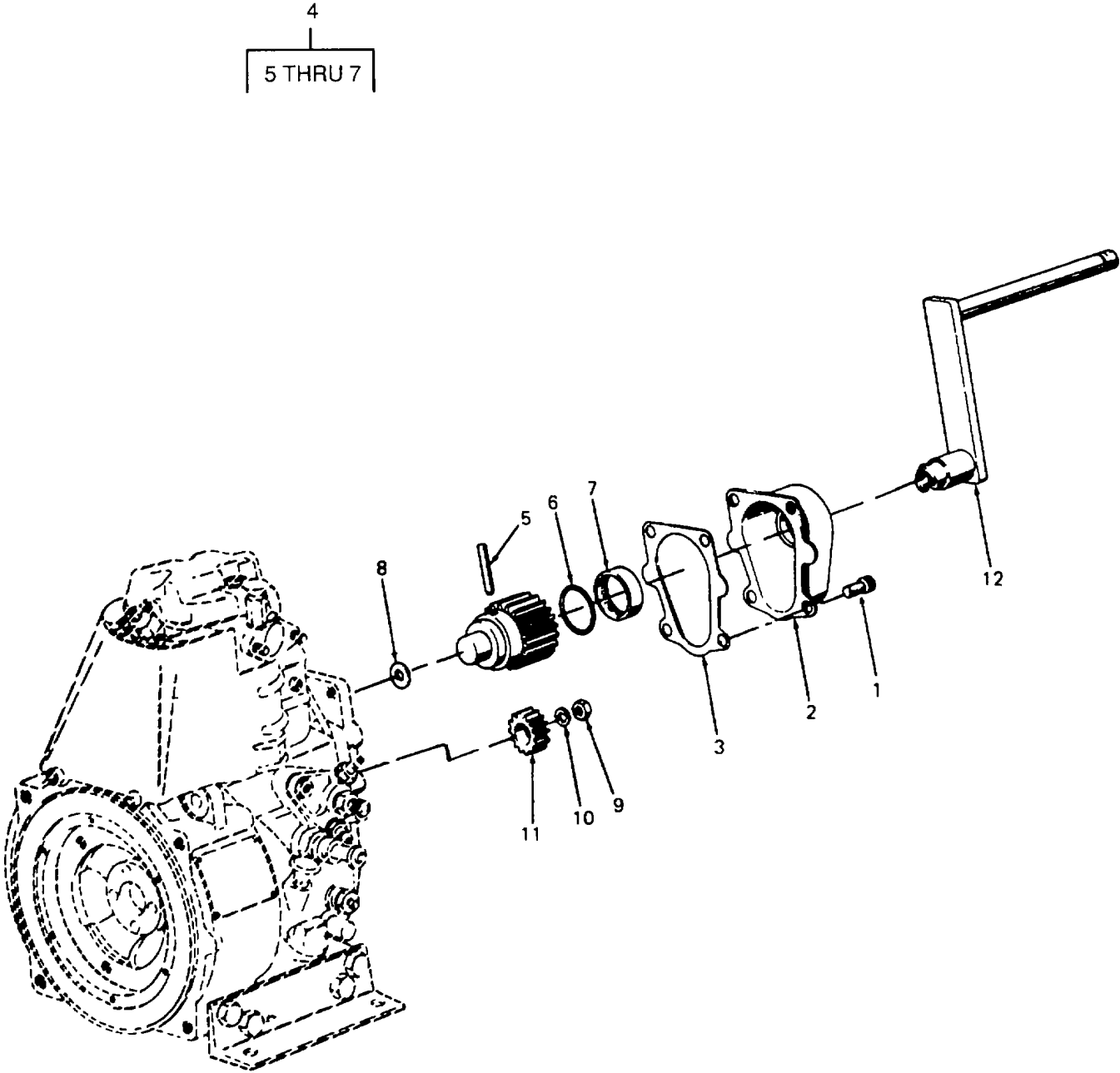


Figure 8. Cranking System.

SECTION II

TM 10-4320-310-24P

(1) ITEM NO	(2) SMR CODE	(3) CAGEC	(4) PART NUMBER	(5) DESCRIPTION AND USABLE ON CODES(UOC)	(6) QTY
-------------------	--------------------	--------------	-----------------------	---	------------

GROUP 06 CRANK ASSEMBLY

FIG. 8 CRANKING SYSTEM

1	XDFZZ	61080	50053400	.SCREW, ALLEN	4
2	XDFZZ	61080	00313701	.HOUSING.....	1
3	PAFZZ	61080	03210000	.GASKET	1
4	XDFZZ	61080	00410611	.GEAR, SPUR	1
5	XDFZZ	61080	03262000	..PIN, HOLLOW	1
6	PAFZZ	61080	50252400	..PACKING ASSEMBLY	1
7	PAFZZ	61080	40019000	..SHELL, NEEDLE	1
8	PAFZZ	61080	40001300	.DISC, WASHER	1
9	XDFZZ	61080	50024500	.NUT, PLAIN, HEXAGON	1
10	XDFZZ	61080	50003200	.WASHER, LOCK.....	1
11	XDFZZ	61080	03112410	.GEAR, SPUR	1
12	PBOZZ	61080	00315000	.HANDLE, STARTING	1

END OF FIGURE

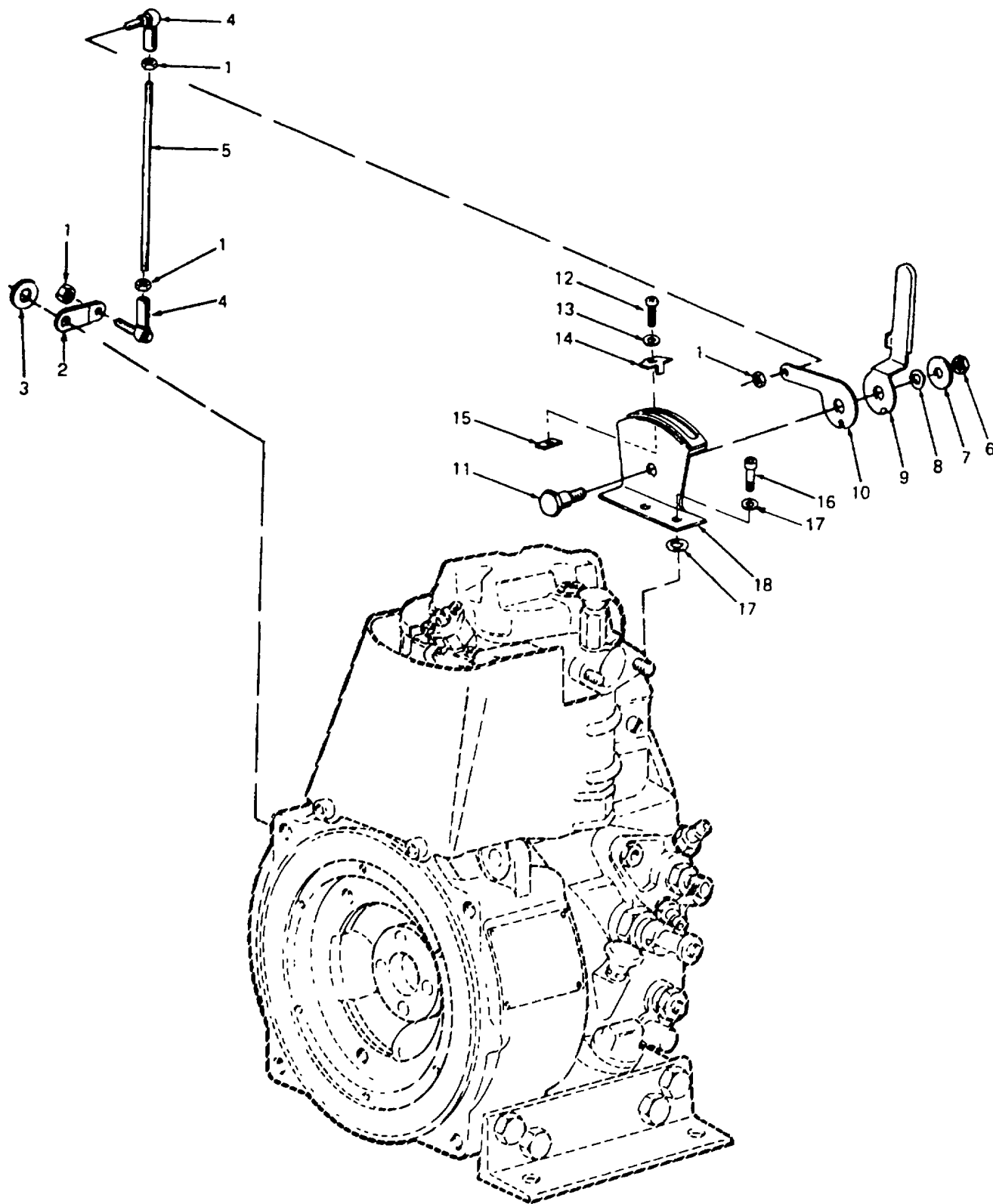


Figure 9. Throttle Linkage.

SECTION II

TM 10-4320-310-24P

(1) ITEM NO	(2) SMR CODE	(3) CAGEC	(4) PART NUMBER	(5) DESCRIPTION AND USABLE ON CODES(UOC)	(6) QTY
GROUP 07 THROTTLE LINKAGE					
FIG. 9 THROTTLE LINKAGE					
1	XDOZA	61080	50022700	.NUT, PLAIN, HEXAGON	4
2	XDOZZ	61080	03511900	.LEVER	1
3	XDOZA	61080	03105600	.WASHER, FLAT.....	1
4	PAOZZ	61080	50133300	.JOINT, ANGULAR.....	2
5	XDOZZ	61080	03511000	.SCREW, ADJUSTING.....	1
6	PAOZZ	61080	50023200	.NUT, HEXAGON	1
7	PAOZZ	61080	50062900	.DISC, WASHER	1
8	XDOZA	61080	50003500	.WASHER, SPRING TENSI.....	1
9	XDOZZ	61080	03511500	.LEVER, HAND.....	1
10	XDOZZ	61080	03511600	.LEVER	1
11	PAOZZ	61080	03511700	.SCREW	1
12	PAOZZ	61080	50025100	.SCREW, HEX.....	2
13	PAOZZ	61080	50016300	.DISC.....	2
14	PAOZZ	61080	03112200	.FLAP, FIXING, SPEED C	2
15	XDOZZ	61080	03112101	.NUT.....	2
16	XDOZZ	61080	50052000	.SCREW, ALLEN.....	2
17	XDOZA	61080	50016700	.WASHER.....	4
18	XDOZZ	61080	00720400	.CONSOLE	1

END OF FIGURE

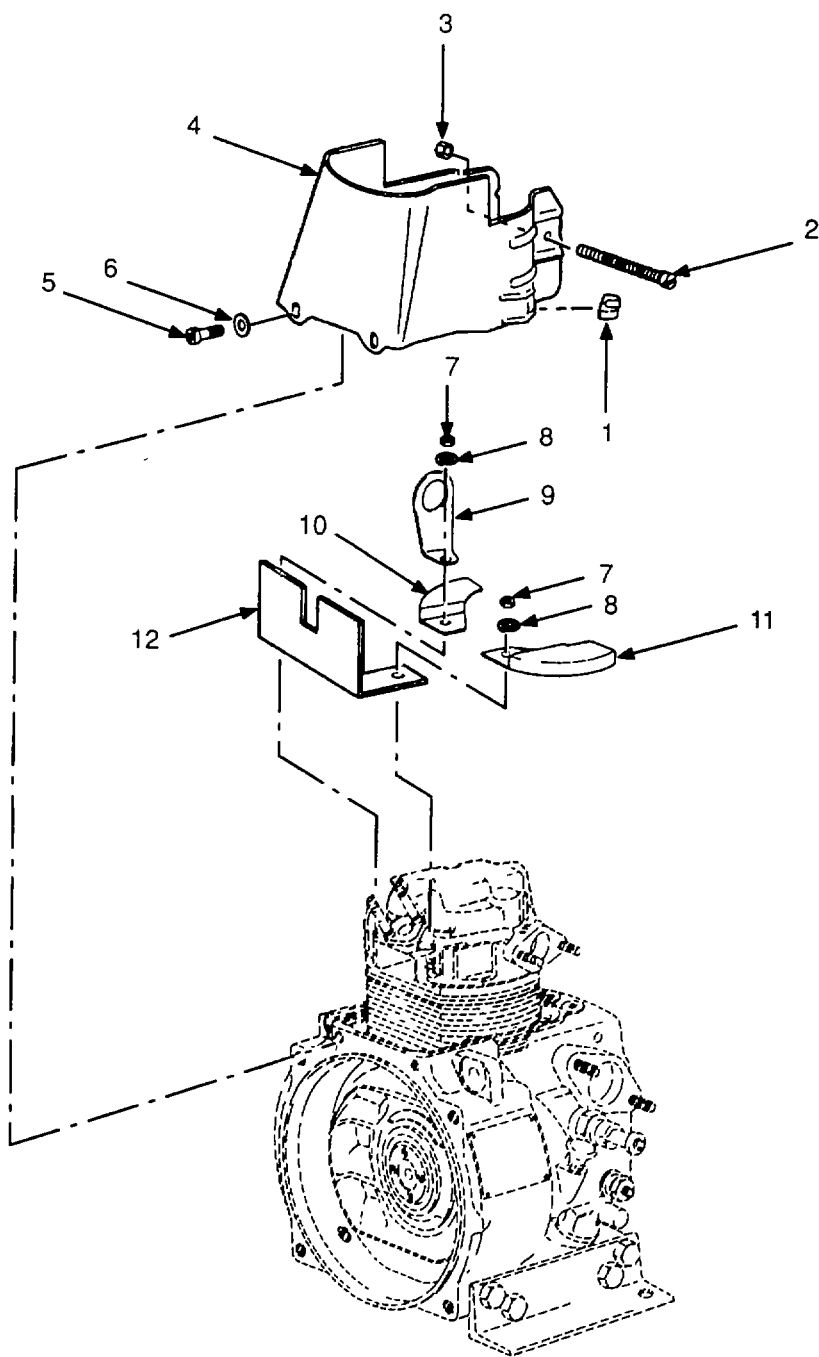


Figure 10. Cowling and Covers.

SECTION II

TM 10-4320-310-24P

(1) ITEM NO	(2) SMR CODE	(3) CAGEC	(4) PART NUMBER	(5) DESCRIPTION AND USABLE ON CODES(UOC)	(6) QTY
-------------------	--------------------	--------------	-----------------------	---	------------

GROUP 08 CYLINDER HEAD AND CYLINDER
ASSEMBLY

FIG. 10 COWLING AND COVERS

1	XDOZZ	61080	03150900	.SPACER, RING	1
2	PAOZZ	61080	50050100	.SCREW, MACHINE.....	1
3	PAOZA	61080	40028200	.NUT, SELF-LOCKING, HE	1
4	XDOZZ	61080	03066601	.SHROUD	1
5	PAOZZ	61080	50051600	.SCREW, CAP, HEXAGON	2
6	PAOZA	61080	50016700	.WASHER	2
7	PAFZZ	61080	50023400	.NUT, PLAIN, HEXAGON	2
8	XDFZZ	61080	03766300	.WASHER, SPRING	2
9	XDFZZ	61080	03457800	.EYE, LIFTING	1
10	XDFZZ	61080	03066501	.COVER LEFT SIDE	1
11	XDFZZ	61080	03066401	.COVER RIGHT SIDE	1
12	XDFZZ	61080	03492900	.SUPPORT, FUEL TANK	1

END OF FIGURE

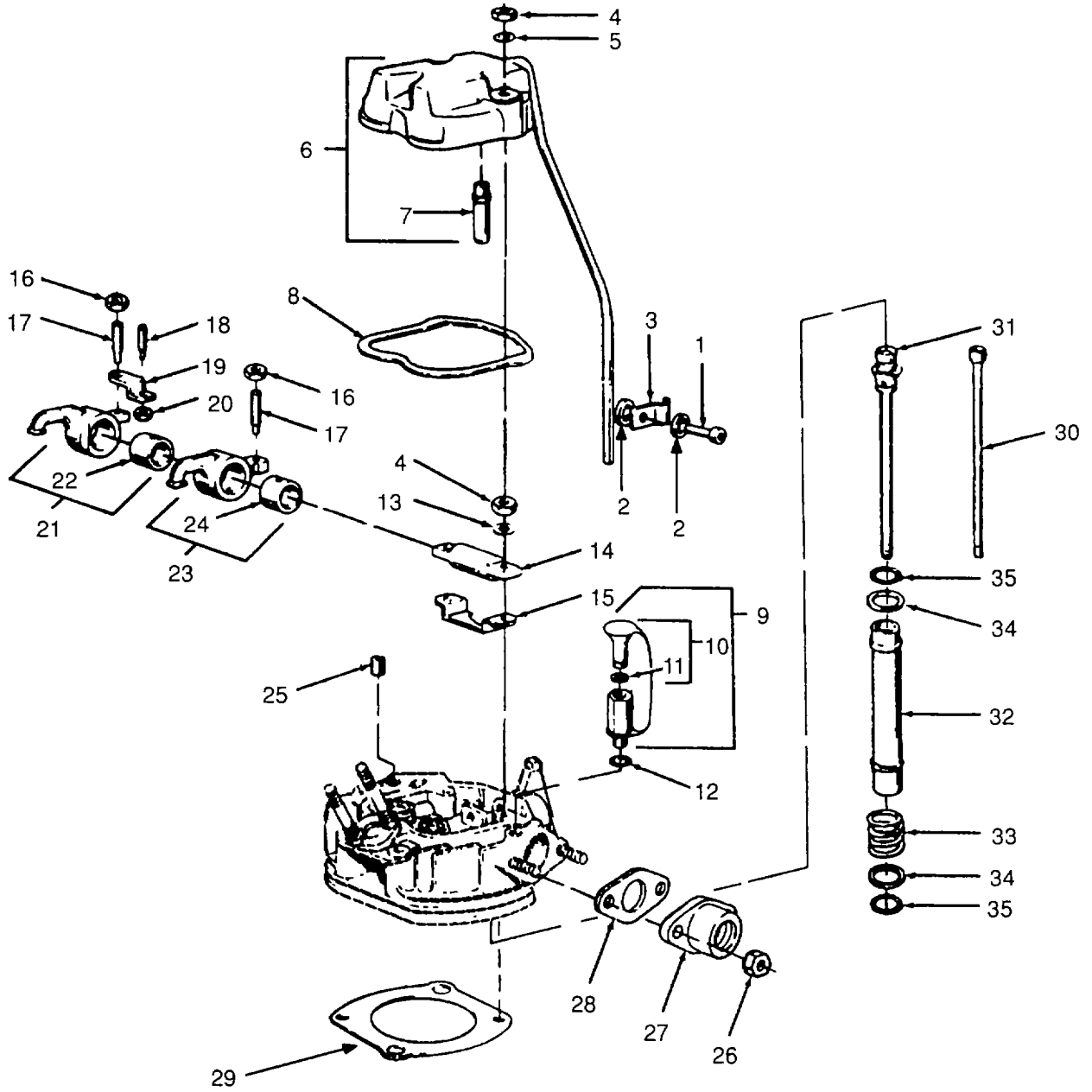


Figure 11. Cylinder Head Cover And Push Rods.

SECTION II

TM 10-4320-310-24P

(1) ITEM NO	(2) SMR CODE	(3) CAGEC	(4) PART NUMBER	(5) DESCRIPTION AND USABLE ON CODES(UOC)	(6) QTY
GROUP 08 CYLINDER HEAD AND CYLINDER ASSEMBLY					
FIG. 11 CYLINDER HEAD COVER AND PUSH RODS					
1	XDOZZ	61080	50051300	.SCREW, ALLEN	1
2	XDOZA	61080	50001000	.GASKET	2
3	XDOZZ	61080	03091500	.CLIP, PIPE	1
4	XDOZZ	61080	50023400	.NUT, PLAIN, HEXAGON	4
5	XDOZA	61080	50003500	.WASHER, SPRING TENSI	2
6	XDOZZ	61080	00313802	.COVER, CYLINDER	1
7	XDOZZ	61080	00362004	.TUBE, BREATHER	1
8	PAOZZ	61080	03208902	.GASKET	1
9	PAOOO	61080	00361801	.CUP ASSEMBLY, CYLIND	1
10	XAOZZ	61080	00736300	.CAP, PROTECTIVE, DUST INCLUDES ATTACHING STRAP	1
11	PAOZA	61080	50154100	...PACKING, PREFORMED.....	1
12	XDOZA	61080	50001100	.GASKET	1
13	XDFZZ	61080	03766300	.WASHER, SPRING.....	2
14	XDFZZ	61080	03061501	.SHAFT, ROCKER	1
15	XDFZZ	61080	03092500	.CLAMP	1
16	XDFZZ	61080	03173100	.NUT, PLAIN, HEXAGON	2
17	XDFZZ	61080	03003700	.SCREW, ADJUSTING	2
18	XDFZZ	61080	03022001	.SCREW, ADJUSTING	1
19	XDFZZ	61080	03060002	.CLAMP	1
20	XDFZA	61080	50022700	.NUT, PLAIN, HEXAGON	1
21	XDFZZ	61080	00614201	.ROCKER ARM	1
22	XDFZZ	61080	03430101	.BUSHING	1
23	XDFZZ	61080	00614301	.ROCKER ARM	1
24	XDFZZ	61080	03430101	.BUSHING	1
25	XDFZZ	61080	50043700	.SCREW, CLOSING	1
26	XDOZZ	61080	40081600	.NUT, HEXAGON	2
27	XDOZZ	61080	03892600	.FLANGE, AIR CLEANER	1
28	PAOZZ	61080	03477200	.GASKET	1
29	PAFZZ	61080	03770300	.GASKET .30 MM THICK	V
29	PAFZA	61080	03581800	.GASKET .40 MM THICK.....	V
29	PAFZA	61080	03581900	.GASKET .50 MM THICK	V
29	PAFZA	61080	03582000	.GASKET .60 MM THICK	V
29	PAFZA	61080	03582100	.GASKET .70 MM THICK	V
29	PAFZA	61080	03582200	.GASKET .80 MM THICK	V
30	XDFZZ	61080	03063901	.PUSHROD, EXHAUST	1
31	XDFZZ	61080	00902600	.PUSHROD, INTAKE	1
32	XDFZZ	61080	03209002	.TUBE, PUSHROD	2
33	XDFZZ	61080	03185100	.SPRING, PRESSURE	2
34	XDFZZ	61080	03209101	.SHIM	4
35	PAFZZ	61080	50258000	.PACKING, PREFORMED	4

END OF FIGURE

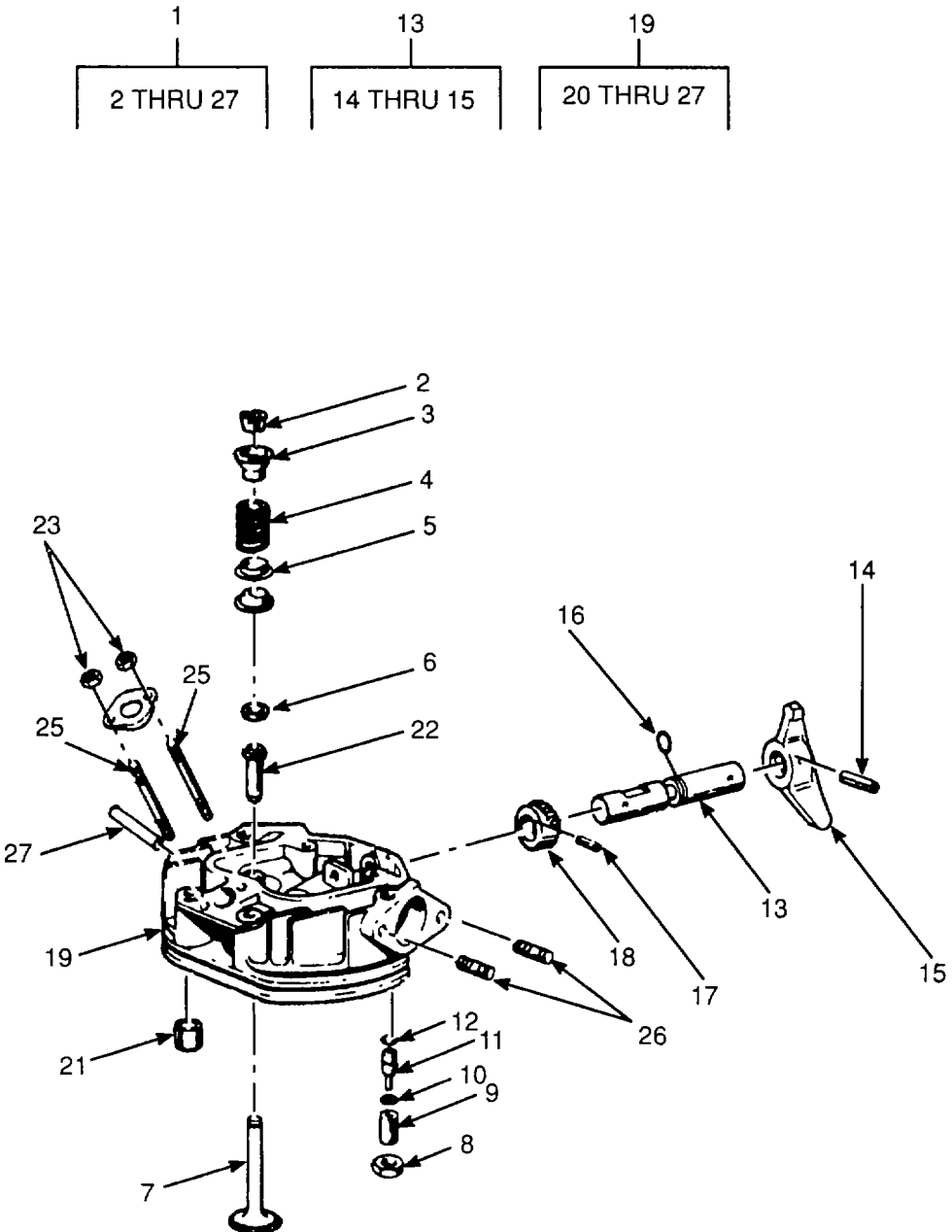


Figure 12. Cylinder Head And Valves.

SECTION II

TM 10-4320-310-24P

(1) ITEM NO	(2) SMR CODE	(3) CAGEC	(4) PART NUMBER	(5) DESCRIPTION AND USABLE ON CODES(UOC)	(6) QTY
-------------------	--------------------	--------------	-----------------------	---	------------

GROUP 08 CYLINDER HEAD AND CYLINDER
ASSEMBLY

FIG. 12 CYLINDER HEAD AND VALVES

1	PBFHH	61080	00907601	..CYLINDER HEAD ASSEM	1
2	XDFZZ	61080	03171910	..COLLET TWO HALVES	2
3	XDFZZ	61080	03060501	..CUP.....	2
4	XDFZZ	61080	03208100	..SPRING, VALVE	2
5	XDFZZ	61080	03208400	..WASHER	2
6	XDFZZ	61080	03208001	..CAP	2
7	XDFZZ	61080	03569820	..VALVE	2
8	XDFZZ	61080	50023800	..NUT, PLAIN, HEXAGON	1
9	XDFZZ	61080	03061100	..PIN, THREADED	1
10	XDFZZ	61080	50042600	..PLATE, SPRING	1
11	XDFZZ	61080	03063800	..PIN	1
12	XDFZA	61080	50154200	..PACKING, PREFORMED	1
13	XDFZZ	61080	00746800	..LEVER	1
14	XDFZZ	61080	50034600	...PIN.....	1
15	XDFZZ	61080	03173401	...LEVER	1
16	PAFZZ	61080	50154300	..PACKING, PREFORMED	1
17	XDFZZ	61080	50034100	..PIN	1
18	XDFZZ	61080	03570600	..PINION	1
19	XAFZZ	61080	00740121	..HEAD, CYLINDER	1
20	XDFZZ	61080	03753800	...RING, SPACER	2
21	XDFZZ	61080	50035700	...PIN	2
22	XDFZZ	61080	03208210	...GUIDE VALVE	2
23	XDFZA	61080	50022700	...NUT, PLAIN, HEXAGON	2
24	PAFZA	61080	03447300	...CLAMP, FUEL INJECTIO	1
25	PAFZA	61080	50111000	...STUD, PLAIN	2
26	PAFZZ	61080	50037800	...STUD, PLAIN	2
27	PAFZA	61080	50037200	...STUD, PLAIN	2

END OF FIGURE

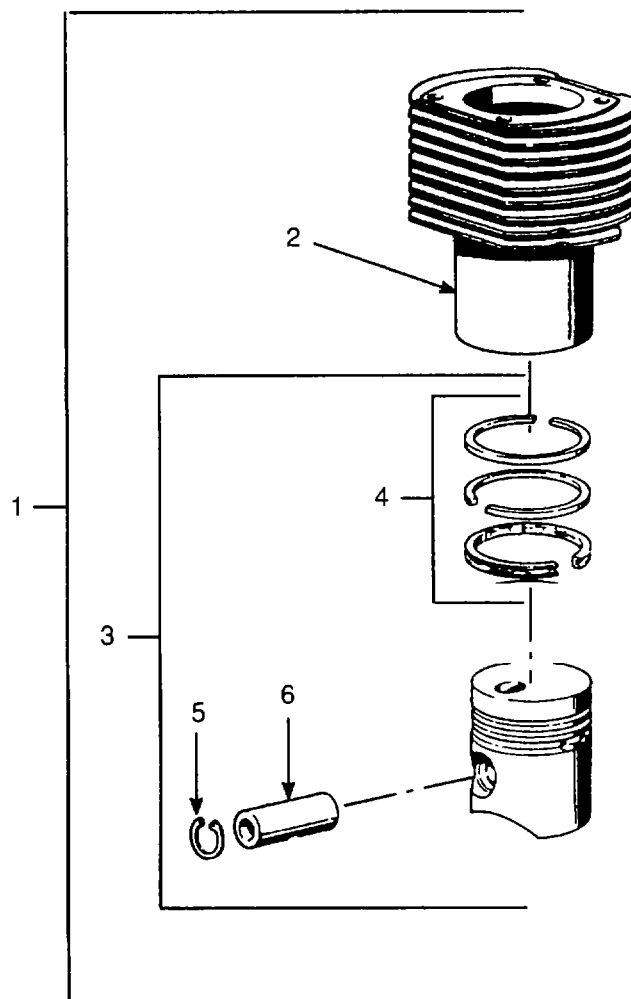


Figure 13. Cylinder and Piston

SECTION II

TM 10-4320-310-24P

(1) ITEM NO	(2) SMR CODE	(3) CAGEC	(4) PART NUMBER	(5) DESCRIPTION AND USABLE ON CODES(UOC)	(6) QTY
-------------------	--------------------	--------------	-----------------------	---	------------

GROUP 08 CYLINDER HEAD AND CYLINDER
ASSEMBLY

FIG. 13 CYLINDER AND PISTON

1	PBHFF	61080	00912700	.CYLINDER WITH PISTO.....	1
2	XDHZZ	61080	03583300	..CYLINDER	1
3	PAHHH	61080	00904100	..PISTON ASSEMBLY	1
4	PAHZA	61080	00904300	...RING SET, PISTON	1
5	PBHZA	61080	50020600	...RING, RETAINING	2
6	XDHZZ	61080	50107500	...PIN, HOLLOW.....	1

END OF FIGURE

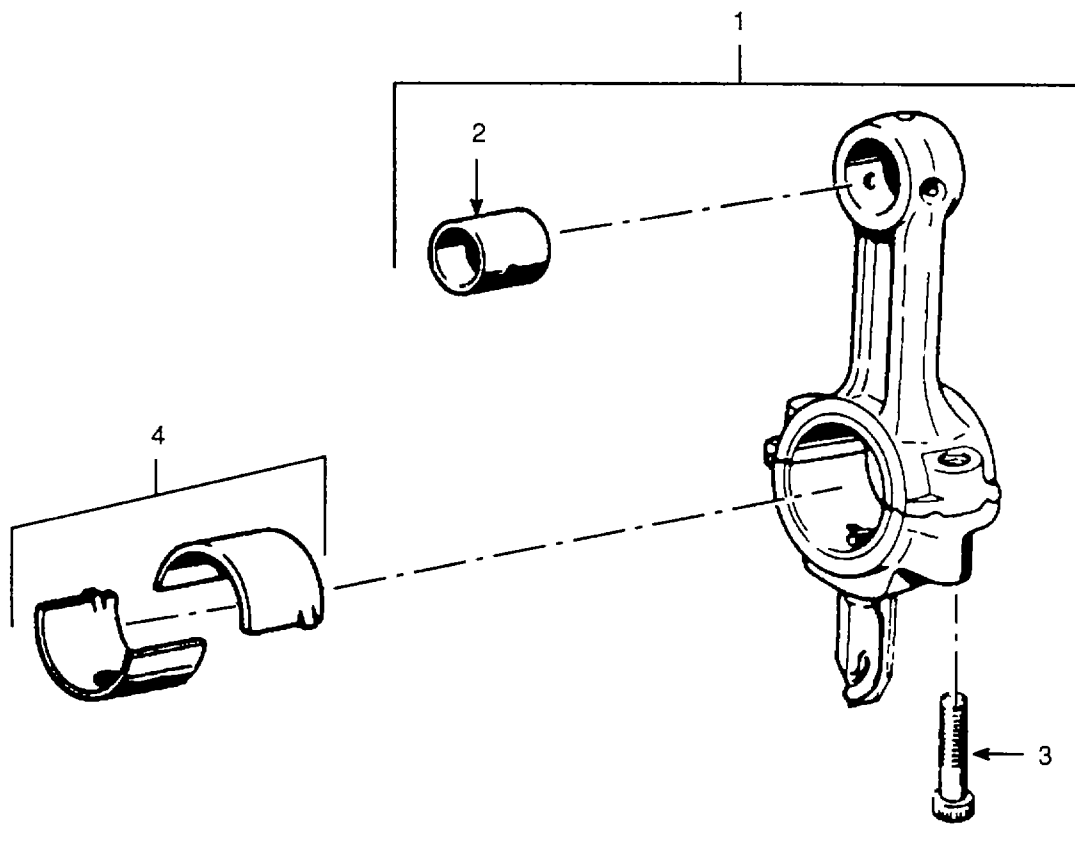


Figure 14. Connecting Rod.

SECTION II

TM 10-4320-310-24P

(1) ITEM NO	(2) SMR CODE	(3) CAGEC	(4) PART NUMBER	(5) DESCRIPTION AND USABLE ON CODES(UOC)	(6) QTY
-------------------	--------------------	--------------	-----------------------	---	------------

GROUP 09 CRANKCASE ASSEMBLY

FIG. 14 CONNECTING ROD

1	XDHHH	61080	00361300	.ROD, CONNECTING.....	1
2	XDHZZ	61080	03206900	..BEARING, SLEEVE..	1
3	XDHZZ	61080	03393700	..SCREW, ALLEN.....	2
4	PAHZA	61080	03206700	.BEARING, SLEEVE TWO HALVES.....	1

END OF FIGURE

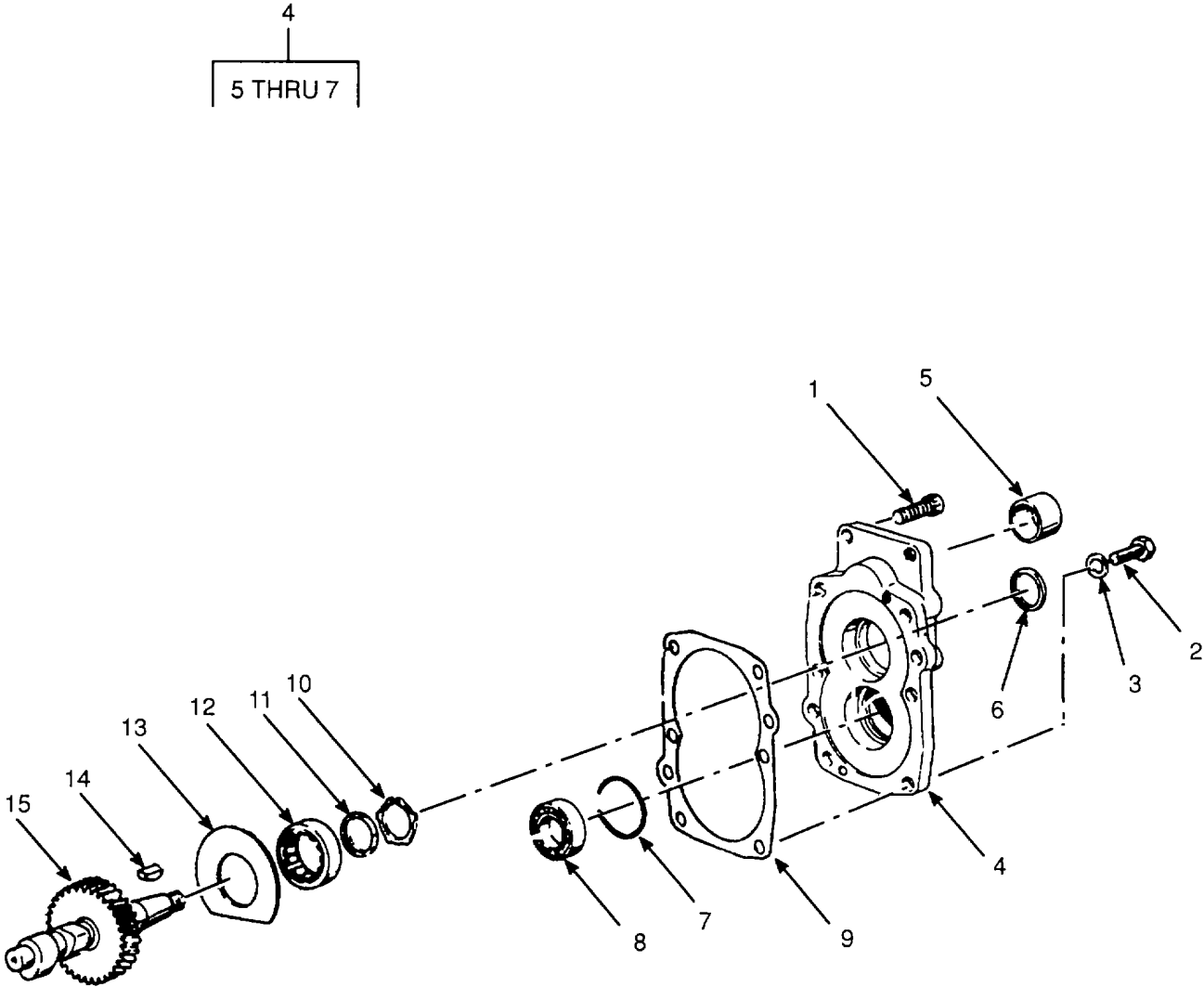


Figure 15. Timing Cover and Camshaft.

SECTION II

TM 10-4320-310-24P

(1) ITEM NO	(2) SMR CODE	(3) CAGEC	(4) PART NUMBER	(5) DESCRIPTION AND USABLE ON CODES(UOC)	(6) QTY
GROUP 09 CRANKCASE ASSEMBLY					
FIG. 15 TIMING COVER AND CAMSHAFT					
1	XDHZZ	61080	50053800	.SCREW, ALLEN	2
2	PAHZA	61080	50029200	.BOLT, MACHINE	4
3	XDHZZ	61080	50001000	.GASKET	4
4	XDHHH	61080	00362310	.COVER, TIMING	1
5	PAHZZ	61080	40032900	..BUSHING, SLEEVE	1
6	XDHZZ	61080	40033700	..SEAL, PLAIN ENCASED	1
7	XDHZZ	61080	03612400	..RING, INTERMEDIATE	1
8	XDHZZ	61080	50012900	.BEARING, BALL	1
9	PAHZA	61080	03209202	.GASKET	1
10	XDHZZ	61080	40037900	.RING, RETAINING	1
11	XDHZZ	61080	03278000	.WHEEL, FLANGED	1
12	XDHZZ	61080	50062200	.BEARING, ROLLER	1
13	XDHZZ	61080	03209300	.SPACER	1
14	XDHZZ	61080	50017900	.KEY, WOODRUFF	1
15	XDHZZ	61080	03430000	.CAMSHAFT	1

END OF FIGURE

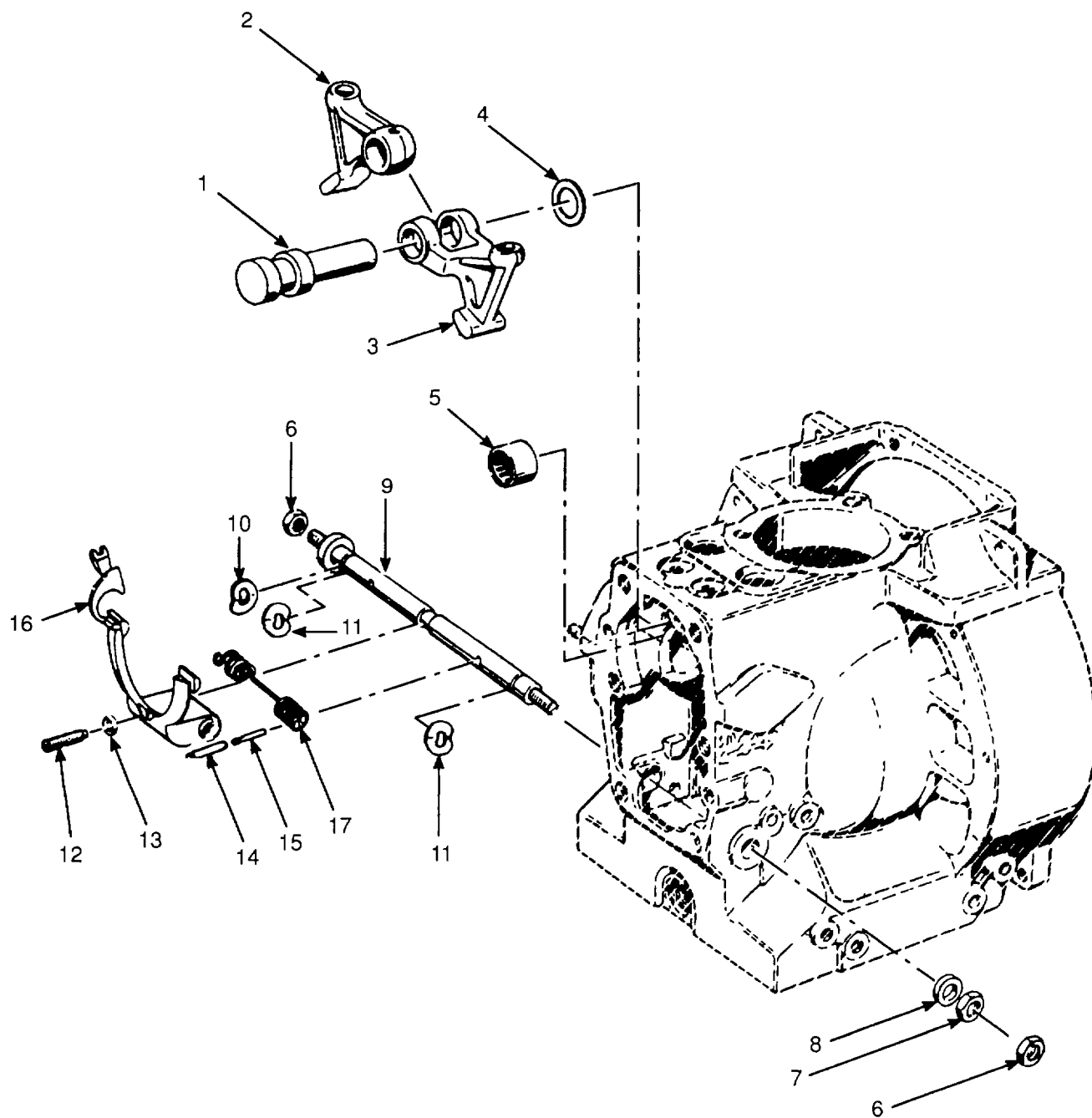


Figure 16. Governor.

SECTION II

TM10-4320-310-24P

(1) ITEM NO	(2) SMR CODE	(3) CAGEC	(4) PART NUMBER	(5) DESCRIPTION AND USABLE ON CODES(UOC)	(6) QTY
-------------------	--------------------	--------------	-----------------------	---	------------

GROUP 09 CRANKCASE ASSEMBLY

FIG. 16 GOVERNOR

1	XDHZZ	61080	03059700	.SPINDLE.....	1
2	XDHZZ	61080	03063401	.CAM FOLLOWER	1
3	XDHZZ	61080	03063301	.CAM FOLLOWER	1
4	XDHZZ	61080	03169800	.SHIM	1
5	XDHZZ	61080	40036800	.BEARING, NEEDLE	1
6	XDHZZ	61080	50023500	.NUT, PLAIN, HEXAGON	2
7	XDHZZ	61080	03206100	.NUT, PLAIN, HEXAGON	1
8	XDHZZ	61080	03146200	.DISC, FRICTION.....	1
9	XDHZZ	61080	00427303	.SHAFT	1
10	XDHZZ	61080	50003600	.WASHER, SPRING.....	1
11	XDHZZ	61080	40022300	.PACKING, PREFORMED.....	2
12	XDHZZ	61080	50004200	.SETSCREW	1
13	XDHZA	61080	50022700	.NUT,PLAIN,HEXAGON	1
14	XDHZZ	61080	50034900	.PIN	2
15	XDHZZ	61080	50034300	.PIN	2
16	XDHZZ	61080	00308704	.LEVER, GOVERNOR	1
17	XDHZZ	61080	03205703	.SPRING, GOVERNOR	1

END OF FIGURE

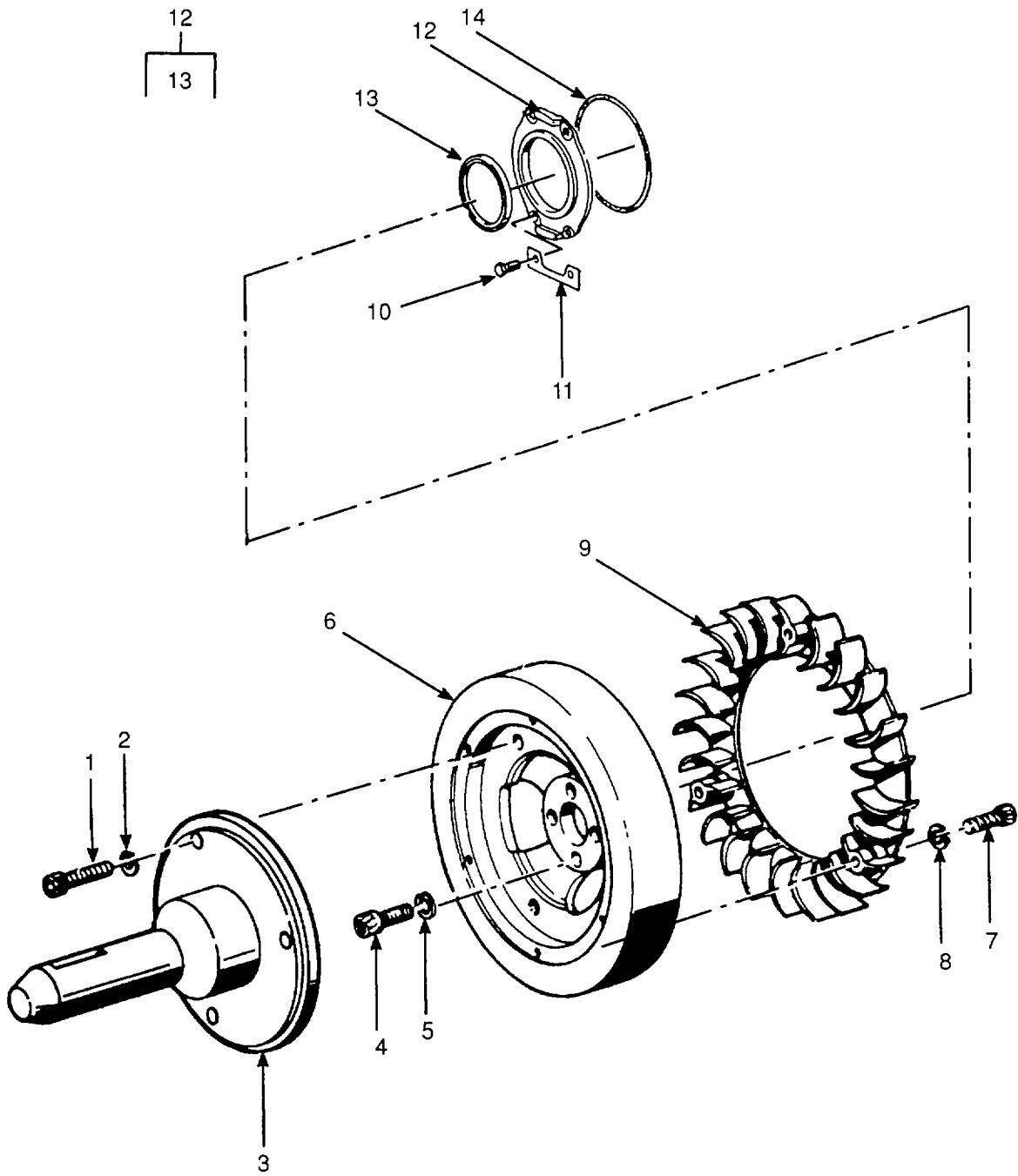


Figure 17. Flywheel and Oil Seal.

SECTION II

TM 10-4320-310-24P

(1) ITEM NO	(2) SMR CODE	(3) CAGEC	(4) PART NUMBER	(5) DESCRIPTION AND USABLE ON CODES(UOC)	(6) QTY
GROUP 09 CRANKCASE ASSEMBLY					
FIG. 17 FLYWHEEL AND OIL SEAL					
1	XDFZZ	61080	50056200	.SCREW, ALLEN.....	3
2	XDFZZ	61080	50061600	.WASHER, LOCK.....	3
3	XDFZZ	61080	03907100	.STUBSHAFT1
4	XDFZZ	61080	50054500	.SCREW, ALLEN.....	4
5	PAFZA	61080	50002900	.WASHER, LOCK.....	4
6	XDFZZ	61080	03063201	.FLYWHEEL.....	1
7	XDFZZ	61080	40035600	.SCREW, ALLEN.....	6
8	XDFZZ	61080	40027800	.WASHER, SPRING.....	6
9	XDFZZ	61080	00635000	.RING, BLOWER	1
10	XDHZZ	61080	50025500	.SCREW, HEXAGON.....	4
11	XDHZZ	61080	03205901	.PLATE.	2
12	XDHZZ	61080	00563001	.COVER, WITH SEAL.....	1
13	PBHZA	61080	40034200	..SEAL, PLAIN ENCASED.....	1
14	PBHZA	61080	50154000	.PACKING, PREFORMED.....	1

END OF FIGURE

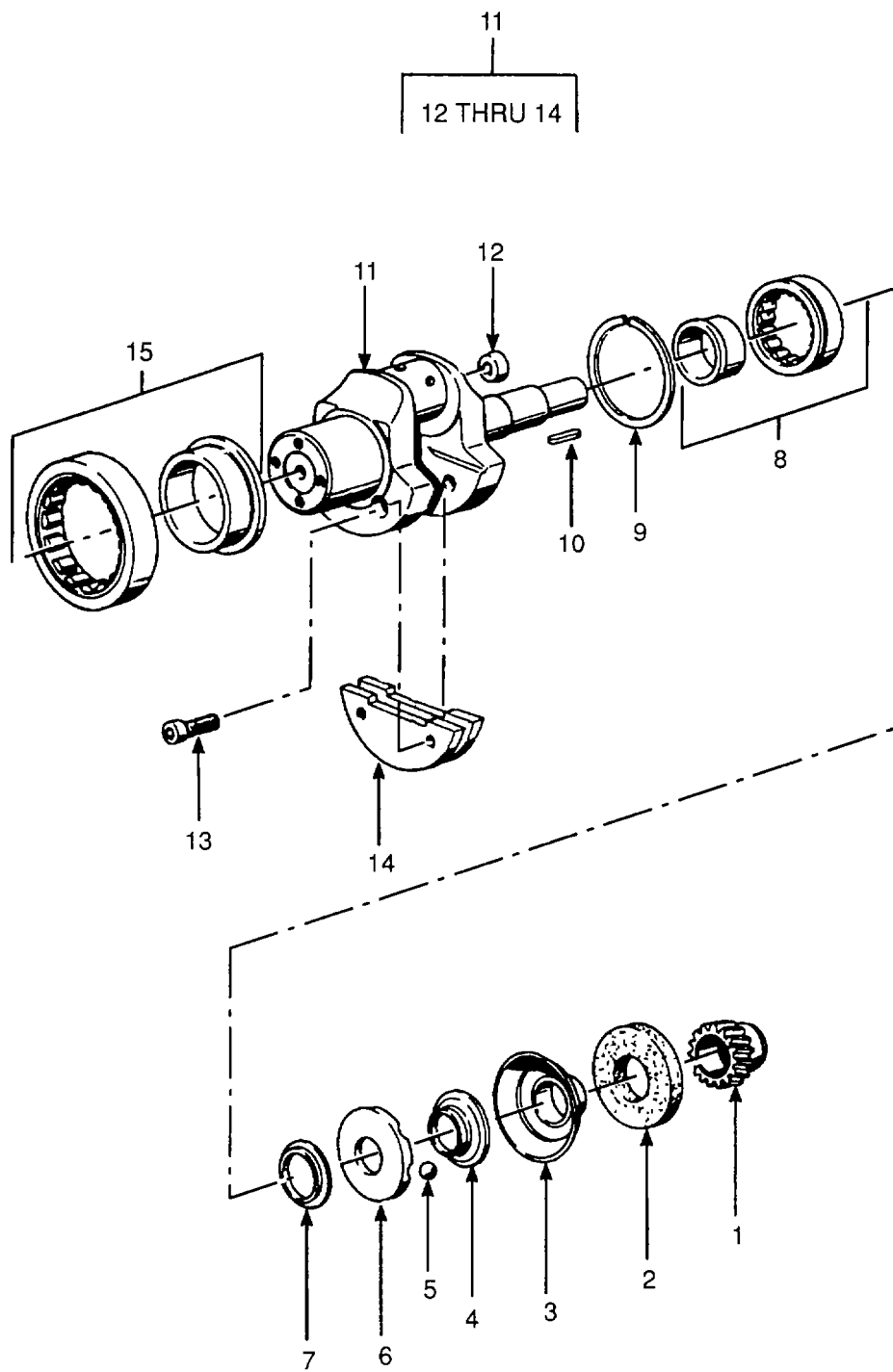


Figure 18. Crankshaft.

SECTION II

TM10-4320-310-24P

(1) ITEM NO	(2) SMR CODE	(3) CAGEC	(4) PART NUMBER	(5) DESCRIPTION AND USABLE ON CODES(UOC)	(6) QTY
-------------------	--------------------	--------------	-----------------------	---	------------

GROUP 09 CRANKCASE ASSEMBLY

FIG. 18 CRANKSHAFT

1	XDHZZ	61080	03064801	.GEARWHEEL.....	1
2	XDHZZ	61080	03004501	.DISC.....	1
3	XDHZZ	61080	00742000	.SHELL, BALL.....	1
4	XDHZZ	61080	03170001	.DISC.....	1
5	XDHZZ	61080	50010000	.BALL.....	4
6	XDHZZ	61080	03006602	.HUB, BALL.....	1
7	XDHZZ	61080	03206600	.SPACER.....	1
8	XDHZZ	61080	50047700	.BEARING.....	1
9	XDHZZ	61080	50036200	.WASHER, SPRING.....	1
10	XDHZZ	61080	50011100	.KEY.....	1
11	XDHZZ	61080	00361202	.CRANKSHAFT ASSEMBLY.....	1
12	XDHZZ	61080	03195000	..PLUG.....	1
13	XDHZZ	61080	50051800	..SCREW, ALLEN.....	4
14	XDHZZ	61080	03060901	..WEIGHT, COUNTER.....	2
15	XDHZZ	61080	50047100	.BEARING.....	1

END OF FIGURE

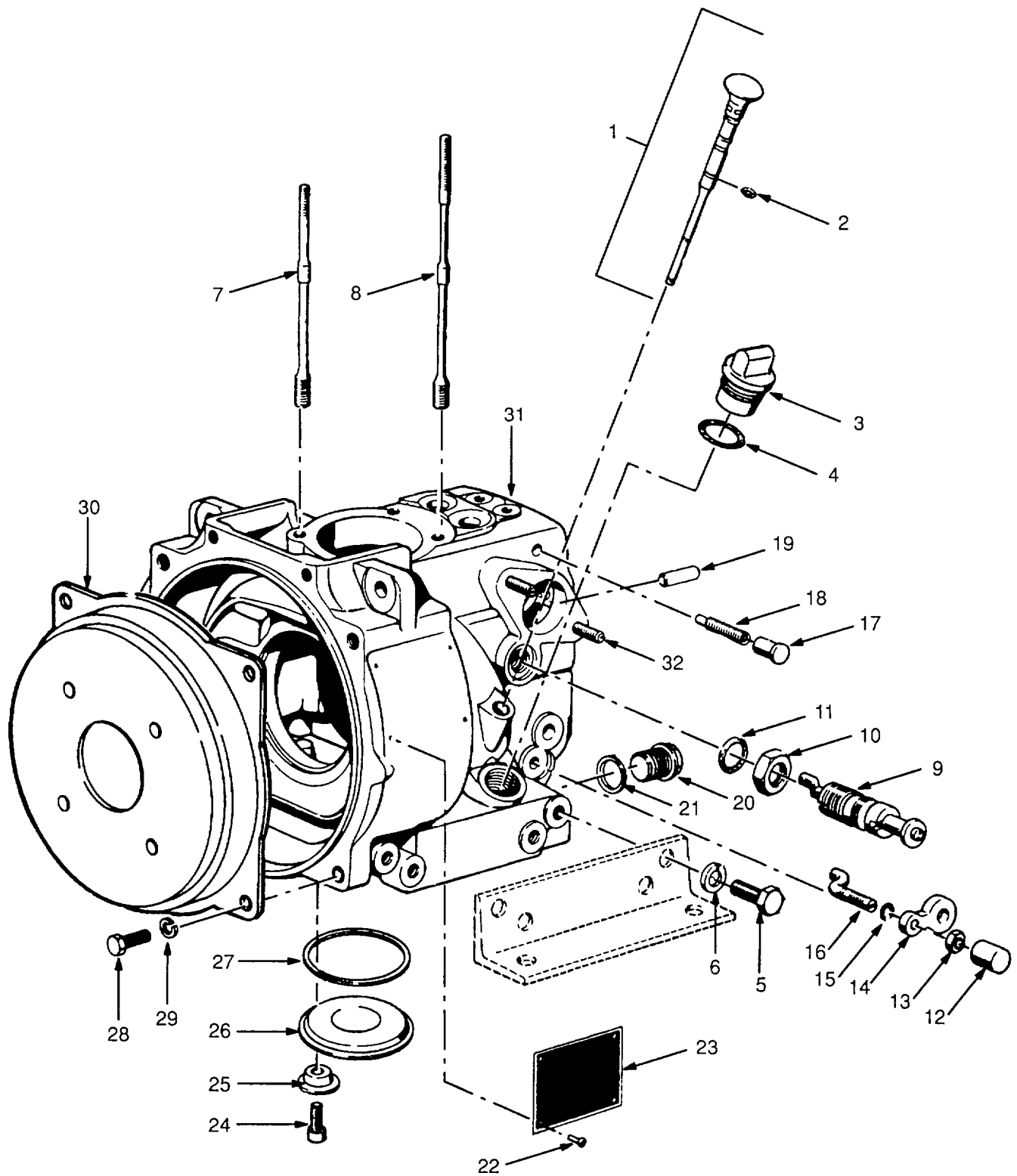


Figure 19. Crankcase.

SECTION II

TM10-4320-310-24P

(1) ITEM NO	(2) SMR CODE	(3) CAGEC	(4) PART NUMBER	(5) DESCRIPTION AND USABLE ON CODES(UOC)	(6) QTY
GROUP 09 CRANKCASE ASSEMBLY					
FIG. 19 CRANKCASE					
1	PBOZZ	61080	00308802	.GAGE ROD, LIQUID LEV.....	1
2	XDOZZ	61080	40022000	..PACKING, PREFORMED.....	1
3	PBOZZ	61080	00632101	.OIL FILL CAP.....	1
4	PAOZA	61080	50153800	.PACKING, PREFORMED.....	1
5	XDFZA	61080	50029200	.BOLT, MACHINE.....	8
6	XDFZA	61080	50002900	.WASHER, LOCK.....	8
7	XDHZZ	61080	03207701	.STUD.....	2
8	XDHZA	61080	03207600	.STUD, RECESSED AND S.....	2
9	XDHZZ	61080	00362400	.DEVICE, EXTRA FUELL	1
10	XDHZZ	61080	50024600	.NUT, PLAIN, HEXAGON	1
11	XDHZA	61080	40022800	.PACKING, PREFORMED.....	1
12	XDHZZ	61080	03205800	.CAP.....	1
13	XDHZZ	61080	50022900	.NUT, PLAIN, HEXAGON	1
14	XDHZZ	61080	03104901	.PLATE.....	1
15	XDHZZ	61080	40021700	.GASKET.....	1
16	XDHZZ	61080	03060403	.PIN, ECCENTRIC.....	1
17	XDHZZ	61080	40039701	.PLUG	1
18	XDHZZ	61080	50062100	.SETSCREW	1
19	XDHZZ	61080	03169300	.PIN, GUIDE	2
20	PBOZZ	61080	03169103	.PLUG, OIL DRAIN.....	1
21	PAOZZ	61080	50001500	.JOINT.....	1
22	XDOZZ	61080	40002500	.RIVET.....	4
23	XDOZZ	61080	03639600	.PLATE, NAME.....	1
24	XDHZZ	61080	50050400	.SCREW, ALLEN.....	4
25	XDHZZ	61080	03206200	.CAP.....	4
26	XDHZZ	61080	03205602	.COVER	1
27	XDHZA	61080	40023800	.PACKING, PREFORMED.....	1
28	XDHZZ	61080	50054100	.SCREW, CAP, HEXX	4
29	XDHZA	61080	50002900	.WASHER, LOCK.....	4
30	XDHZZ	61080	03897400	.COVER, FLYWHEEL	1
31	XDFZZ	61080	03611800	.CRANKCASE	1
32	XDFZA	61080	50037300	..STUD, PLAIN	2

END OF FIGURE

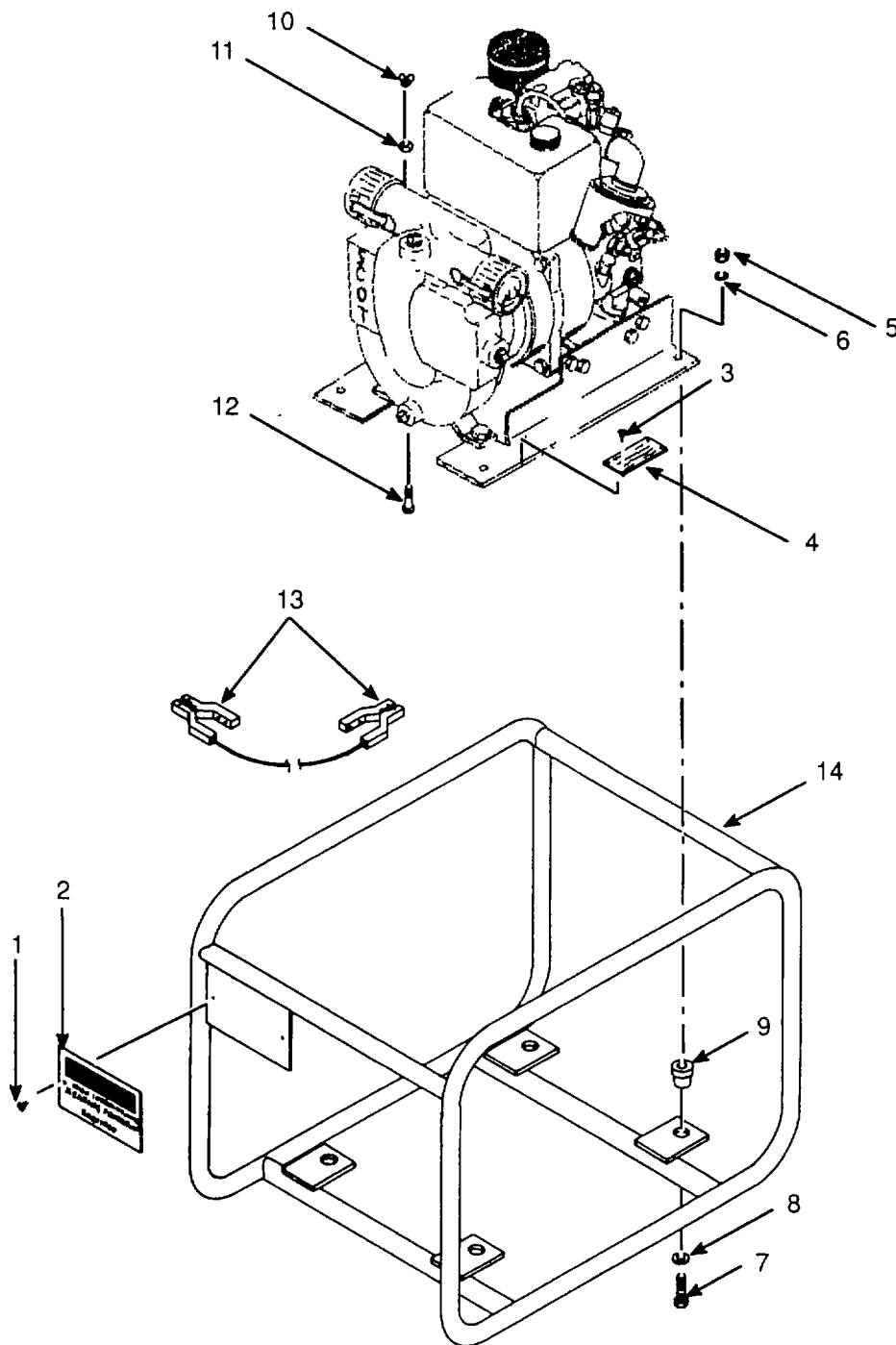


Figure 20. Frame Assembly.

SECTION II

TM10-4320-310-24P

(1) ITEM NO	(2) SMR CODE	(3) CAGEC	(4) PART NUMBER	(5) DESCRIPTION AND USABLE ON CODES(UOC)	(6) QTY
-------------------	--------------------	--------------	-----------------------	---	------------

GROUP 10 FRAME ASSEMBLY

FIG. 20 FRAME ASSEMBLY

1	XDFZZ	96906	MS20600ADW4	RIVET,POP	2
2	XDFZZ	13646	117.000.526	PLATE, WARNING.....	1
3	XDFZZ	96906	MS21318-27	SCREW,DRIVE	4
4	XDFZZ	13646	117.000.549	PLATE, IDENT	1
5	XDFZZ	96906	MS51967-14	NUT, PLAIN, HEXAGON	4
6	XDFZZ	96906	MS35338-29	WASHER, LOCK.....	4
7	XDFZZ	96906	MS90725-116	SCREW, CAP, HEX	4
8	XDFZZ	88044	AN960-7	WASHER, FLAT.....	4
9	XDFZZ	76005	CB-1121-2	SHOCKMOUNT.....	4
10	XDFZZ	96906	MS35425	NUT, WING	1
11	XDFZZ	96906	MS51967-8	NUT, PLAIN.....	2
12	XDFZZ	96906	MS35291-64	SCREW, CAP, HEX	1
13	PAOZZ	97403	13220E1127	LEAD,ELECTRICAL 6 FOOT.....	1
14	XDFZZ	13646	119.000.473	FRAME.....	1

END OF FIGURE

SECTION II

TM10-4320-310-24P

(1) ITEM NO	(2) SMR CODE	(3) CAGEC	(4) PART NUMBER	(5) DESCRIPTION AND USABLE ON CODES(UOC)	(6) QTY
-------------------	--------------------	--------------	-----------------------	---	------------

GROUP 11 BULK MATERIALS

FIG. BULK

1	PAOZZ	61080	03738100	.HOSE, BULK.....	1
---	-------	-------	----------	------------------	---

END OF FIGURE

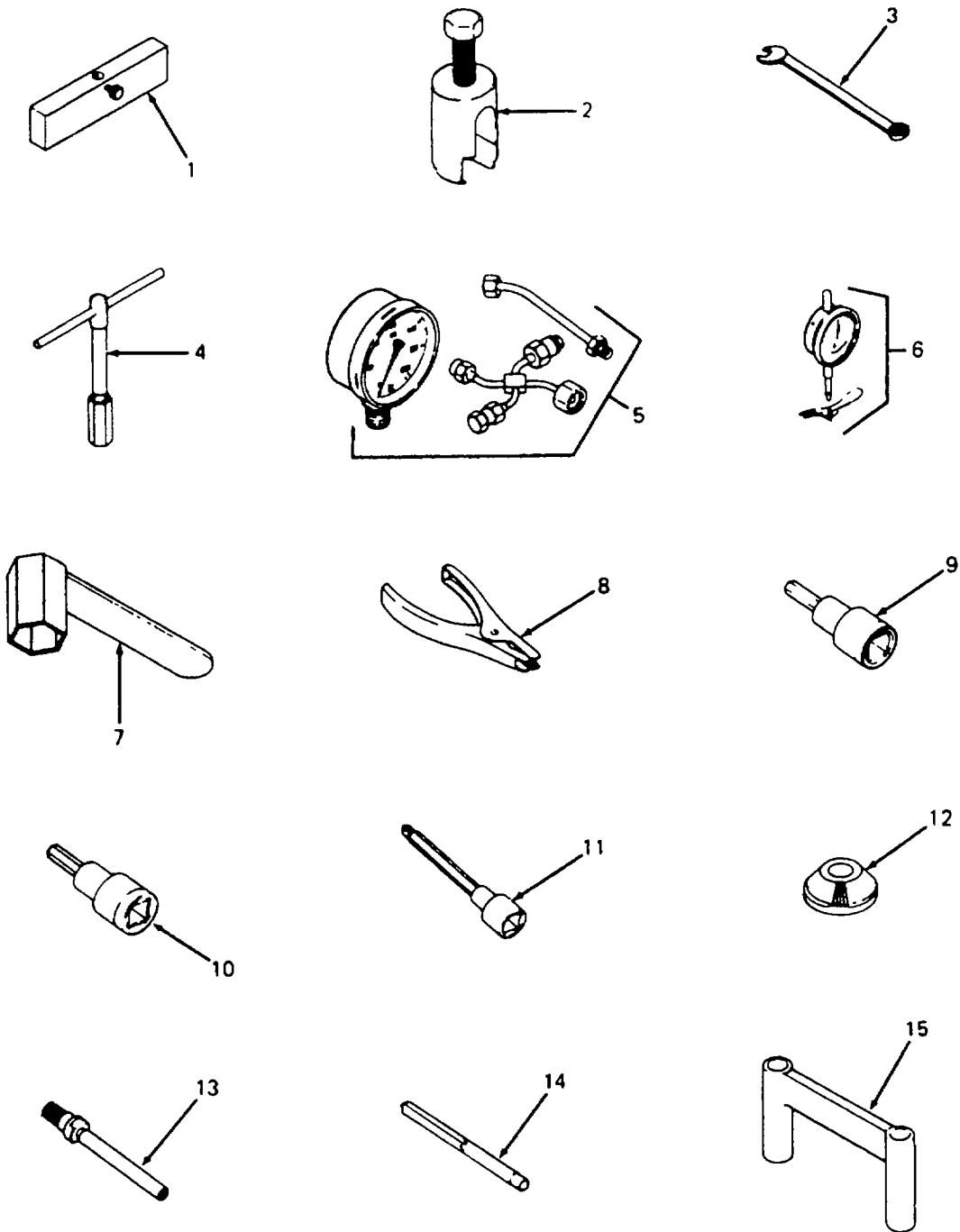


Figure 21. Special Tools (Sheet 1 of 2).

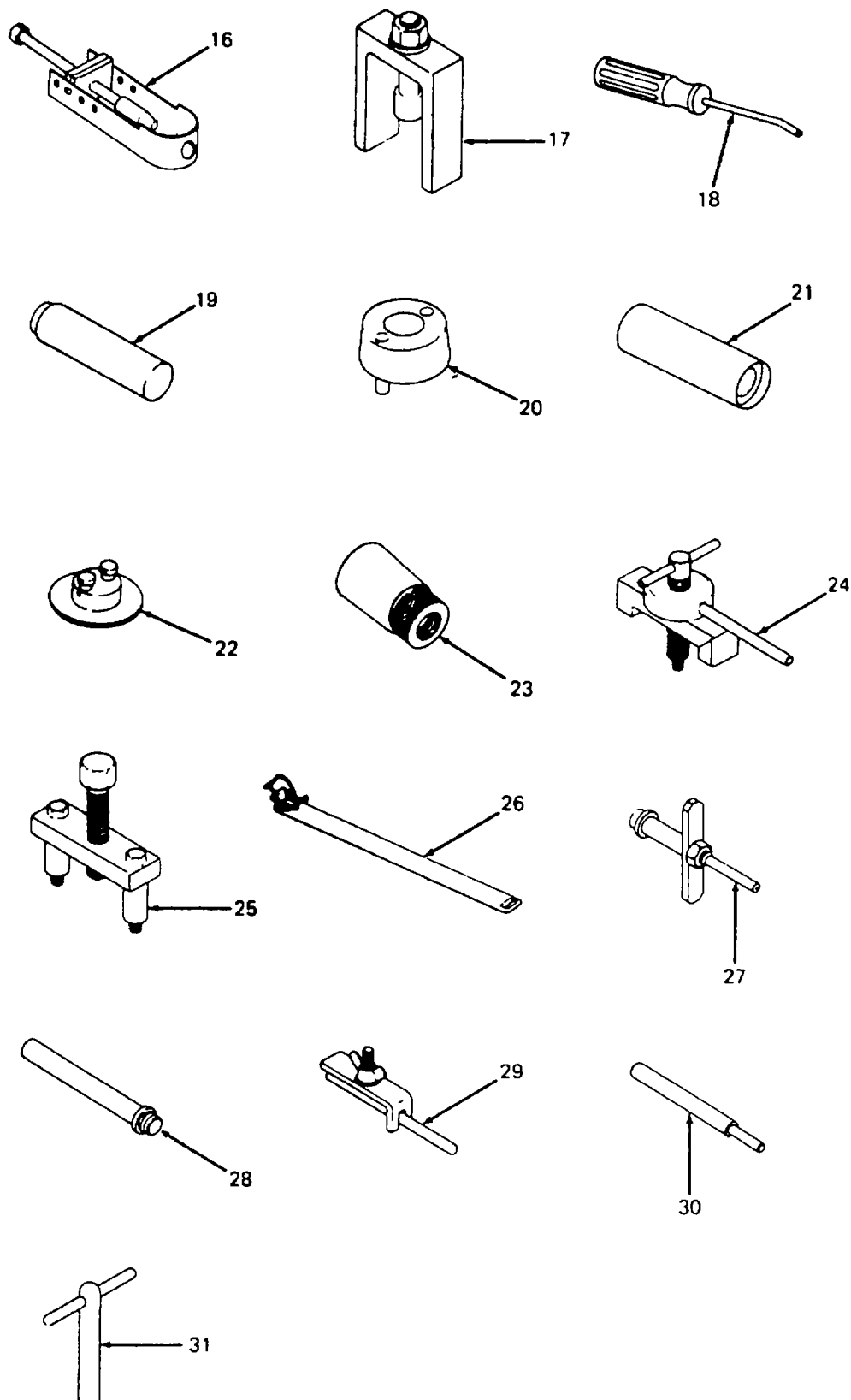


Figure 21. Special Tools (Sheet 2 of 2).

SECTION III

TM10-4320-310-24P

(1) ITEM NO	(2) SMR CODE	(3) CAGEC	(4) PART NUMBER	(5) DESCRIPTION AND USABLE ON CODES(UOC)	(6) QTY
-------------------	--------------------	--------------	-----------------------	---	------------

GROUP 12 SPECIAL TOOLS

FIG. 21 SPECIAL TOOLS

1	PDFZZ	61080	60311400	DEVICE, MEASURING.....	
2	PDFZZ	61080	60382300	PULLER,MECHANICAL.....	
3	PDOZZ	61080	61830600	WRENCH,BOX AND OPEN.....	
4	PDHZZ	61080	60458100	HOLDER,CLAMPING.....	
5	PDFZZ	61080	60462800	DEVICE,TESTING.....	
6	PDFZZ	61080	61208700	GAG;E,DIAL.....	
7	PDFZZ	61080	66833500	WRENCH,SOCKET.....	
8	PDFZZ	61080	61209000	PLIERS,PISTON RING.....	
9	PDHZZ	61080	61209100	SOCKET WRENCH ATTAC.....	
10	PDOZZ	61080	61209500	SOCKET,ALLEN.....	
11	PDFZZ	61080	612099	SOCKET, SCREW.....	
12	PDHZZ	61080	61210300	TOOL RESE ATING.....	
13	PDHZZ	61080	61210400	PIN,GUIDING,RESEATI.....	
14	PDHZZ	61080	61210700	REAMER,HAND.....	
15	PDFZZ	61080	61275200	BRACKET,RETAINING.....	
16	PDFZZ	61080	61495700	REHOVER,PIN.....	
17	PDHZZ	61080	61816800	PULLER,MECHANICAL.....	
18	PDHZZ	61080	61830500	TOOL,SPECIAL,GOVERN.....	
19	PDHZZ	61080	66606700	MANDREL,IMPACT,BALL.....	
20	PDHZZ	61080	66606800	SUPPORT BUSHING,OIL.....	
21	PDHZZ	61080	66606900	MANDREL,IMPACT,GEAR.....	
22	PDHZZ	61080	66607400	MOUNTING DEVICE,CRA.....	
23	PDHZZ	L1080	66607500	BUSHING TIMING.....	
24	PDHZZ	61080	66632400	PULLER,MECHANICAL.....	
25	PDHZZ	61080	66632701	PUJLLER,MECHANICAL.....	
26	PDIZZ	61080	66634600	CLAMP,PISTON RING.....	
27	PDHZZ	61080	66641800	MOUNT,CAMSHAFT.....	
28	PLHZZ	61080	66642500	PUNCH,CAMSHAFT.....	
29	PDFZZ	61080	66838300	CLAMP,FUEL SHUTOFF.....	
30	PDHZZ	61080	66934700	PRESS-IN MANDREL,VA.....	
31	PDHZZ	61080	67032300	HANDLE,VALVE RESEAT.....	

END OF FIGURE

CROSS-REFERENCE INDEXES

STOCK NUMBER	NATIONAL STOCK NUMBER INDEX				
	FIG.	ITEM	STOCK NUMBER	FIG.	ITEM
5315-00-043-1787	1	30	5310-01-264-6201	2	6
5310-00-080-6004	1	8	5305-01-264-6222	4	1
	1	15	4330-01-264-6225	4	4
5306-00-225-9088	1	10	5305-01-264-6226	4	5
5306-00-225-9089	1	19		7	1
5305-00-272-4123	1	22	5340-01-264-6228	4	13
5305-00-281-3118	1	33	5310-01-264-6229	4	19
4730-00-287-2182	1	13	5310-01-264-6230	4	21
5340-00-291-3492	1	17	4330-01-264-6231	5	3
4320-00-559-1518	1	20	5310-01-264-6234	6	3
4320-00-559-1519	1	34	2910-01-264-6235	6	8
3040-00-559-1520	1	29	5310-01-264-6236	7	5
4320-00-564-9061	1	11	2910-01-264-6238	8	7
5330-00-612-2414	1	2	5310-01-264-6239	8	8
5315-00-730-4563	1	28	2990-01-264-6240	8	12
5330-01-017-8352	1	26	5310-01-264-6241	9	6
2815-01-068-3790	13	4	5310-01-264-6242	9	7
5305-01-069-8897	10	2	5305-01-264-6243	9	11
5365-01-070-2325	13	5	5305-01-264-6244	9	12
5330-01-070-6701	17	13	5305-01-264-6284	5	1
5330-01-070-7136	19	4	5330-01-264-6285	5	2
5307-01-070-9174	12	25	5330-01-264-6286	5	6
5307-01-071-1326	12	27	5330-01-264-6287	7	7
5330-01-074-1503	11	29	5330-01-264-6288	8	3
5330-01-074-1504	15	9	5330-01-264-6291	11	29
5330-01-074-2105	11	29	4820-01-264-6294	6	7
5330-01-074-2106	11	29	5365-01-264-6330	6	16
5330-01-074-2107	11	29	5365-01-264-6331	6	16
5330-01-074-2108	11	29	5365-01-264-6332	6	16
5306-01-074-6815	15	2	2910-01-264-6337	4	31
5330-01-077-3913	11	11	6680-01-264-6338	19	1
5330-01-078-4508	6	16	2910-01-264-6339	6	2
2910-01-079-8052	12	24	2940-01-264-6347	2	8
5310-01-079-9886	10	6	5340-01-265-1751	9	14
5330-01-079-9960	17	14	2815-01-265-1752	11	9
5310-01-080-0025	6	4	2815-01-265-1753	12	1
5310-01-080-0033	10	3	2815-01-265-1754	13	1
5330-01-080-1776	6	6	5120-01-265-1803	21	4
3120-01-080-3018	14	4	5210-01-265-1804	21	5
5310-01-080-4987	10	7	5120-01-265-1805	21	8
5310-01-080-4999	17	5	5120-01-265-1806	21	10
5330-01-082-6176	6	16	5340-01-265-1808	21	15
5310-01-100-5204	4	29	5120-01-265-1809	21	18
5330-01-101-7264	6	14	5120-01-265-1810	21	19
5370-01-101-8063	6	10	5120-01-265-1811	21	20
5330-01-101-8076	4	10	5120-01-265-1812	21	21
5120-01-102-1670	21	9	5120-01-265-1813	21	22
5330-01-148-0218	2	10	5120-01-265-1814	21	23
6685-01-160-8579	2	1	5120-01-265-1815	21	26
6150-01-197-6335	20	13	5120-01-265-1816	21	27

CROSS-REFERENCE INDEXES

STOCK NUMBER	NATIONAL STOCK NUMBER INDEX		FIG.	ITEM
	FIG.	ITEM		
5120-01-265-1817			21	28
5120-01-265-1818	21	29		
5120-01-265-1819	21	30		
5120-01-265-1820	21	31		
5120-01-265-1918	21	7		
5330-01-265-1925	11	35		
5330-01-265-1926	12	16		
5110-01-265-1934	21	14		
3120-01-265-1945	15	5		
5120-01-265-1966	21	2		
5120-01-265-1967	21	17		
5120-01-265-1968	21	24		
5120-01-265-1969	21	25		
5120-01-265-1971	21	3		
5120-01-265-2015	21	16		
4940-01-266-0711	21	12		
5315-01-266-0712	21	13		
5330-01-267-2307	8	6		
5307-01-267-2308	4	30		
5340-01-267-2310	4	27		
5210-01-269-2717	21	6		
5305-01-325-8387	1	9		

CROSS-REFERENCE INDEXES

CAGEC	PART NUMBER	PART NUMBER INDEX		FIG.	ITEM
			STOCK NUMBER		
88044	AN960-7			20	8
76005	CB-1121-2			20	9
61080	E673LHK-241A			3	3
96906	MS124698		5340-00-291-3492	1	17
96906	MS20066-141		5315-00-730-4563	1	28
96906	MS20600ADW4			20	1
96906	MS20913-4			1	12
96906	MS20913-8		4730-00-287-2182	1	13
96906	MS21318-27			20	3
96906	MS27022-11			1	3
96906	MS27026-11			1	5
96906	MS27028-11			1	1
96906	MS27029-11			1	4
96906	MS27030-6		5330-00-612-2414	1	2
96906	MS27183-14		5310-00-080-6004	1	8
				1	15
96936	MS29513-270			1	18
96906	MS35291-64			20	12
96906	MS35338-29			20	6
96906	MS35338-46			1	7
96906	MS35425			20	10
96906	MS35756-34		5315-00-043-1787	1	30
96906	MS51021-23		5305-00-272-4123	1	22
96906	MS51021-32		5305-00-281-3118	1	33
96906	MS51923-286			1	32
96906	MS51967-14			20	5
96906	MS51967-8			1	6
				20	11
96906	MS90725-116			20	7
96906	MS90725-64		5305-01-325-8387	1	9
96906	MS90726-33		5306-00-225-9088	1	10
96906	MS90726-34		5306-00-225-9089	1	19
96906	MS90726-59			1	14
18265	RAX00-2350		6685-01-160-8579	2	1
61080	00308704			16	16
61080	00308802		6680-01-264-6338	19	1
61080	00313701			8	2
61000	00313802			11	6
61080	00315000		2990-01-264-6240	8	12
61080	00361202			18	11
61080	00361300			14	1
61080	00361801		2815-01-265-1752	11	9
61080	00362004			11	7
61080	00362310			15	4
61080	00362400			19	9
61080	00410611			8	4
61080	00427303			16	9
61080	00563001			17	12
61080	00614201			11	21
61080	00614301			11	23
61080	00632101			19	3

CROSS-REFERENCE INDEXES

CAGEC	PART NUMBER	PART NUMBER INDEX STOCK NUMBER	FIG.	ITEM
61080	00635000		17	9
61080	00671001	4820-01-264-6294	6	7
61080	00691300		4	28
61080	00720400		9	18
61080	00736300		11	10
61080	00740121		12	19
61080	00742000		18	3
61080	00746800		12	13
61080	00902600		11	31
61080	00904100		13	3
61080	00904300	2815-01-068-3790	13	4
61080	00907601	2815-01-265-1753	12	1
61080	00912700	2815-01-265-1754	13	1
61080	03003700		11	17
61080	03004501		18	2
61080	03006602		18	6
61080	03022001		11	18
61080	03059700		16	1
61080	03060002		11	19
61080	03060403		19	16
61080	03060501		12	3
61080	03060901		18	14
61080	03061100		12	9
61080	03061501		11	14
61080	03062600		6	17
61080	03063201		17	6
61080	03063301		16	3
61080	03063401		16	2
61080	03063800		12	11
61080	03063901		11	30
61080	03064000		6	18
61080	03064801		18	1
61080	03066401		10	11
61080	03066501		10	10
61080	03066601		10	4
61080	03091500		11	3
61080	03092500		11	15
61080	03104901		19	14
61080	03105600		9	3
61080	03112101		9	15
61080	03112200	5340-01-265-1751	9	14
61080	03112410		8	11
61080	03146200		16	8
61080	03150900		10	1
61000	03165500		4	2
61080	03169103		19	20
61080	03169300		19	19
61080	03169800		16	4
61080	03170001		18	4
61080	03171910		12	2
61080	03173100		11	16

CROSS-REFERENCE INDEXES

CAGEC	PART NUMBER	PART NUMBER INDEX STOCK NUMBER	FIG.	ITEM
61080	03173401		12	15
61080	03185100		11	33
61080	03195000		18	12
61080	03205602		19	26
61080	03205703		16	17
61080	03205800		19	12
61080	03205901		17	11
61080	03206100		16	7
61080	03206200		19	25
61080	03206600		18	7
61080	03206700	3120--01-080-3018	14	4
61080	03206900		14	2
61080	03207600		19	8
61080	03207701		19	7
61080	03208001		12	6
61080	03208100		12	4
61080	03208210		12	22
61080	03208400		12	5
61080	03208902		11	8
61080	03209002		11	32
61080	03209101		11	34
61080	03209202	5330-01-074-1504	15	9
61080	03209300		15	13
61080	03209400	5365-01-264-6330	6	16
61080	03209500	5330-01-082-6176	6	16
61080	03209600	5330-01-078-4508	6	16
61080	03209700	5365-01-264-6331	6	16
61080	03209800	5365-01-264-6332	6	16
61080	03210000	5330-01-264-6288	8	3
61080	03262000		8	5
61080	03278000		15	11
61080	03292900		4	6
61080	03393700		14	3
61080	03405700		6	1
61080	03430000		15	15
61080	03430101		11	22
61080	03447300	2910-01-079-8052	11	24
61080	03447300		12	24
61080	03457800		10	9
61080	03477200		11	28
61080	03485000		6	5
61080	03492900		10	12
61080	03493000		4	25
61080	03493100		4	12
61080	03493300		4	17
61080	03493600		4	16
61080	03511000		9	5
61080	03511500		9	9
61080	03511600		9	10
61080	03511700	5305-01-264-6243	9	11
61080	03511900		9	2

CROSS-REFERENCE INDEXES

CAGEC	PART NUMBER	PART NUMBER INDEX STOCK NUMBER	FIG.	ITEM
61080	03520600		4	3
61080	03525600		4	8
61080	03525800		4	26
61080	03569820		12	7
61030	03570600		12	18
61030	03581800	5330-01-074-2105	11	29
61080	03581900	5330-01-074-2106	11	29
61080	03582000	5330-01-074-2107	11	29
61080	03582100	5330-01-074-1503	11	29
61080	03582200	5330-01-074-2108	11	29
61080	03583300		13	2
61080	03611800		19	31
61080	03612400		15	7
61080	03639600		19	23
61080	03674200		4	14
61080	03699700		7	4
61080	03738100		BULK	1
61080	03753800		12	20
61080	03766300		10	8
			11	13
61080	03770300	5330--01-264-6291	11	29
61080	03892600		11	27
61080	03897400		19	30
61080	03899000		7	3
61080	03907100		17	3
00736	1DM-007	2940-01-264-6347	2	8
00736	1NB-001		2	7
13646	106.000.131		2	3
13646	117.000.526		20	2
13646	117.000.549		20	4
13646	119.000.473		20	14
13646	119.000.474		3	1
13646	119.000.475		3	2
00736	12B-006	5330-01-148-0218	2	10
00736	12PGJW/STEM		2	9
97e03	1321E3948		1	16
97403	13219E3937	4320-00-559-1518	1	20
97403	13219E3939		1	23
97603	13219E3940		1	24
97403	13219E3941		1	21
97403	13219E3942	5330-01-017-8352	1	26
97403	13219E3943	3040-00-559-1520	1	29
97403	13219E3944		1	27
97(03	13219E3945	4320-00-559-1519	1	34
97403	13219E3946		1	35
97403	13219E3947		1	31
97403	13219E3949	4320-00-564-9061	1	11
97403	13220E1127	6150-01-197-6335	20	13
974n3	13228E3243		1	25
00736	204302		2	4
00736	204302-800		2	11

CROSS-REFERENCE INDEXES

CAGEC	PART NUMBER	PART NUMBER INDEX		FIG.	ITEM
			STOCK NUMBER		
00736	20515C			2	5
00736	22852		5310-01-264-6201	2	6
61080	40001300		5310-01-264-6239	8	8
61080	40002500			19	22
61080	40003100		5310-01-264-6234	6	3
61080	40006600		2910-01-264-6339	6	2
61080	40019000		2910-01-264-6238	8	7
61080	40021700			19	15
61080	40022000			19	2
61080	40022300			16	11
61080	40022800			19	11
61080	40023800			19	27
61080	40027800			17	8
61080	40028200		5310-01-080-0033	10	3
61080	40028300		5310-01-100-5204	4	29
61080	40028400			4	24
61080	40032611		5340-01-267-2310	4	27
61080	40032900		3120-01-265-1945	15	5
61080	40033700			15	6
61080	40034200		5330-01-070-6701	17	13
61080	40035600			17	7
61080	40036800			16	5
61080	40037300		5340-01-264-6228	4	13
61080	40037900			15	10
61080	40039701			19	17
61080	40080201		2910-01-264-6235	6	8
61080	40081600		5310-31-264-6236	7	5
				11	26
61080	40089401		4330-01-264-6225	4	4
61080	40092700			4	15
61080	40093300			4	20
39428	4830K111			2	2
61080	49003100			6	9
61080	49003700			6	13
61080	49003900			6	12
61080	49004300			6	11
61080	49004400		5330-01-101-7264	6	14
61080	49004700		5330-01-101-8063	6	10
61080	49018100			5	4
61080	49018200			5	5
61080	49018300		4330-01-264-6231	5	3
61080	49018400		5330-01-264-6285	5	2
61080	49018500		5305-01-264-6284	5	1
61080	49036900			6	15
61080	50001000			11	2
				15	3
61080	50001100		5330-01-080-1776	6	6
				11	12
61080	50001200		5330-01-101-8076	4	10
61080	50001500			19	21
61080	50002900		5310-01-080-4999	17	5

CROSS-REFERENCE INDEXES

CAGEC	PART NUMBER	PART NUMBER INDEX STOCK NUMBER	FIG.	ITEM
61080	50002900		19	6
			19	29
61080	50003200		8	10
61080	50003500		9	8
			11	5
61080	50003600		16	10
61080	50004200		16	12
61080	50006400		4	9
61080	50010000		18	5
61080	50011100		18	10
61080	50012900		15	8
61080	50015900		4	11
61080	50016300		9	13
61080	50016700		9	17
		5310-01-079-9886	10	6
61080	50016800		7	2
61080	50017900		15	14
61080	50020600	5365-01-070-2325	13	5
61080	50022700		9	1
			11	20
			12	23
			16	13
61080	50022900	5310-01-080-0025	6	4
			19	13
61080	50023200	5310-01-264-6241	9	6
61080	50023400	5310-01-080-4987	10	7
			11	4
61080	50023500		16	6
61080	50023800		12	8
61080	50024500		8	9
61080	50024600		19	10
61080	50025100	5305-01-264-6244	9	12
61080	50025500		17	10
61080	50029200	5306-01-074-6815	15	2
			19	5
61080	50034100		12	17
61080	50034300		16	15
61080	50034600		12	14
61080	50034900		16	14
61080	50035700		12	21
61080	50036200		18	9
61080	50037200	5307--01-071-1326	12	27
61080	50037300		19	32
61080	50037800		12	26
61080	50042600		12	10
61080	50043700		11	25
61080	50047100		18	15
61080	50047700		18	8
61080	50050100	5305-01-069-8897	10	2
61080	50050400		19	24
61080	50051300		11	1

CROSS-REFERENCE INDEXES

CAGEC	PART NUMBER	PART NUMBER INDEX STOCK NUMBER	FIG.	ITEM
61080	50051600		10	5
61080	50051800		18	13
61080	50052000		9	16
61080	50052700	5305-01-264-6222	4	1
61080	50053400		8	1
61080	50053800		15	1
61080	50054100		19	28
61080	50054500		17	4
61080	50056200		17	1
61080	50061600		17	2
61080	50062100		19	18
61080	50062200		15	12
61080	50062400	5310-01-264-6229	4	19
61080	50062900	5310-01-264-6242	9	7
61080	50107500		13	6
61080	50111000	5307-01-070-9174	12	25
61080	50122400	5330-01-264-6287	7	7
61080	50129900	5330-01-264-6286	5	6
61080	50133300		9	4
61080	50138900		4	7
61080	50144300	5307-01-267-2308	4	30
61080	50153800	5330-01-070-7136	19	4
61080	50154000	5330-01-079-9960	17	14
61080	50154100	5330-01-077-3913	11	11
61080	50154200		12	12
61080	50154300	5330-01-265-1926	12	16
61080	50158300	5310-01-264-6230	4	21
61080	50169700		4	18
61080	50171500		4	22
61080	50171600		4	23
61080	50173100	5305-01-264-6226	4	5
			7	1
61080	50181400	2910-01-264-6337	4	31
61080	50252400	5330-01-267-2307	8	6
61080	50258000	5330-01-265-1925	11	35
61080	60311400		21	1
61080	60382300	5120-01-265-1966	21	2
61080	60458100	5120-01-265-1803	21	4
61080	60462800	5210-01-265-1804	21	5
61080	61208700	5210-01-269-2717	21	6
61080	61209000	5120-01-265-1805	21	8
61080	61209100	5120-01-102-1670	21	9
61080	61209500	5120-01-265-1806	21	10
61080	612099		21	11
61080	61210300	4940-01-266-0711	21	12
61080	61210400	5315-01-266-0712	21	13
61080	61210700	5110-01-265-1934	21	14
61080	61275200	5340-01-265-1808	21	15
61080	61495700	5120-01-265-2015	21	16
61080	61816800	5120-01-265-1967	21	17
61080	61830500	5120-01-265-1809	21	18

CROSS-REFERENCE INDEXES

CAGEC	PART NUMBER	PART NUMBER INDEX		FIG.	ITEM
			STOCK NUMBER		
61080	61830600		5120-01-265-1971	21	3
61080	66606700		5120-01-265-1810	21	19
61080	66606800		5120-01-265-1811	21	20
61080	66606900		5120-01-265-1812	21	21
61080	66607400		5120-01-265-1813	21	22
61080	66607500		5120-01-265-1814	21	23
61080	66632400		5120-01-265-1968	21	24
61080	66632701		5120-01-265-1969	21	25
61080	66634600		5120-01-265-1815	21	26
61080	66641800		5120-01-265-1816	21	27
61080	66642500		5120-01-265-1817	21	28
61080	66833500		5120-01-265-1918	21	7
61080	66838300		5120-01-265-1818	21	29
61080	66934700		5120-01-265-1819	21	30
61080	67032300		5120-01-265-1820	21	31
61080	99400010			7	6

CROSS-REFERENCE INDEXES

FIG.	ITEM	FIGURE AND ITEM .NUMBER INDEX STOCK NUMBER	CAGEC	PART NUMBER
BULK	1		61080	03738100
1	1		96906	MS27028-11
1	2	5330-00-612-2414	96906	MS27030-6
1	3		96906	MS27022-11
1	4		96906	MS27029-11
1	5		96906	MS27026-11
1	6		96906	MS51967-8
1	7		96906	MS35338-46
1	8	5310-00-080-6004	96906	MS27183-14
1	9	5305-01-325-8387	96906	MS90725-64
1	10	5306-00-225-9088	96906	MS90726-33
1	11	4320-00-564-9061	97403	13219E3949
1	12		96906	MS20913-4
1	13	4730-00-287-2182	96906	MS20913-8
1	14		96906	MS90726-59
1	15	5310-00-080-6004	96906	MS27183-14
1	16		97403	1321E3948
1	17	5340-00-291-3492	96906	MS124698
1	18		96936	MS29513-270
1	19	5306-00-225-9089	96906	MS90726-34
1	20	4320-00-559-1518	97403	13219E3937
1	21		97403	13219E3941
1	22	5305-00-272-4123	96906	MS51021-23
1	23		97403	13219E3939
1	24		97403	13219E3940
1	25		97403	13228E3243
1	26	5330-01-017-8352	97403	13219E3942
1	27		97403	13219E3944
1	28	5315-00-730-4563	96906	MS20066-141
1	29	3040-00-559-1520	97403	13219E3943
1	30	5315-00-043-1787	96906	MS35756-34
1	31		97403	13219E3947
1	32		96906	MS51923-286
1	33	5305-00-281-3118	96906	MS51021-32
1	34	4320-00-559-1519	97403	13219E3945
1	35		97403	13219E3946
2	1	6685-01-160-8579	18265	RAX00-2350
2	2		39428	4830K111
2	3		13646	106.000.131
2	4		00736	204302
2	5		00736	20515C
2	6	5310-01-264-6201	00736	22852
2	7		00736	1NB-001
2	8	2940-01-264-6347	00736	1DM-007
2	9		00736	12PGJW/STEM
2	10	5330-01-148-0218	00736	12B-006
2	11		00736	204302-800
3	1		13646'	119.000.474
3	2		13646	119.000.475
3	3		61080	E673LHK-241A
4	1	5305-01-264-6222	61080	50052700

CROSS-REFERENCE INDEXES

FIG.	ITEM	FIGURE AND ITEM .NUMBER INDEX STOCK NUMBER	CAGEC	PART NUMBER
4	2		61080	03165500
4	3		61080	03520600
4	4	4330-01-264-6225	61080	40089401
4	5	5305-01-264-6226	61080	50173100
4	6		61080	03292900
4	7		61080	50138900
4	8		61080	03525600
4	9		61080	50006400
4	10	5330-01-101-8076	61080	50001200
4	11		61080	50015900
4	12		61080	03493100
4	13	5340-01-264-6228	61080	40037300
4	14		61080	03674200
4	15		61080	40092700
4	16		61080	03493600
4	17		61080	03493300
4	18		61080	50169700
4	19	5310-01-264-6229	61080	50062400
4	20		61080	40093300
4	21	5310-01-264-6230	61080	50158300
4	22		61080	50171500
4	23		61080	50171600
4	24		61080	40028400
4	25		61080	03493000
4	26		61080	03525800
4	27	5340-01-267-2310	61080	40032611
4	28		61080	00691300
4	29	5310-01-100-5204	61080	40028300
4	30	5307-01-267-2308	61080	50144300
4	31	2910-01-264-6337	61080	50181400
5	1	5305-01-264-6284	61080	49018500
5	2	5330-01-264-6285	61080	49018400
5	3	4330-01-264-6231	61080	49018300
5	4		61080	49018100
5	5		61080	49018200
5	6	5330-01-264-6286	61080	50129900
6	1		61080	03405700
6	2	2910-01-264-6339	61080	40006600
6	3	5310-01-264-6234	61080	40003100
6	4	5310-01-080-0025	61080	50022900
6	5		61080	03485000
6	6	5330-01-080-1776	61080	50001100
6	7	4820-01-264-6294	61080	00671001
6	8	2910-01-264-6235	61080	40080201
6	9		61080	49003100
6	10	5330-01-101-8063	61080	49004700
6	11		61080	49004300
6	12		61080	49003900
6	13		61080	49003700
6	14	5330-01-101-7264	61080	49004400
6	15		61080	49036900

CROSS-REFERENCE INDEXES

FIG.	ITEM	FIGURE AND ITEM .NUMBER INDEX STOCK NUMBER	CAGEC	PART NUMBER
6	16	5330-01-078-4508	61080	03209600
6	16	5330-01-082-6176	61080	03209500
6	16	5365-01-264-6330	61080	03209400
6	16	5365-01-264-6331	61080	03209700
6	16	5365-01-264-6332	61080	03209800
6	17		61080	03062600
6	18		61080	03064000
7	1	5305-01-264-6226	61080	50173100
7	2		61080	50016800
7	3		61080	03899000
7	4		61080	03699700
7	5	5310-01-264-6236	61080	40081600
7	6		61080	99400010
7	7	5330-01-264-6287	61080	50122400
8	1		61080	50053400
8	2		61080	00313701
8	3	5330-01-264-6288	61080	03210000
8	4		61080	00410611
8	5		61080	03262000
8	6	5330-01-267-2307	61080	50252400
8	7	2910-01-264-6238	61080	40019000
8	8	5310-01-264-6239	61080	40001300
8	9		61080	50024500
8	10		61080	50003200
8	11		61080	03112410
8	12	2990-01-264-6240	61080	00315000
9	1		61080	50022700
9	2		61080	03511900
9	3		61080	03105600
9	4		61080	50133300
9	5		61080	03511000
9	6	5310-01-264-6241	61080	50023200
9	7	5310-01-264-6242	61080	50062900
9	8		61080	50003500
9	9		61080	03511500
9	10		61080	03511600
9	11	5305-01-264-6243	61080	03511700
9	12	5305-01-264-6244	61080	50025100
9	13		61080	50016300
9	14	5340-01-265-1751	61080	03112200
9	15		61080	03112101
9	16		61080	50052000
9	17		61080	50016700
9	18		61080	00720400
10	1		61080	03150900
10	2	5305-01-069-8897	61080	50050100
10	3	5310-01-080-0033	61080	40028200
10	4		61080	03066601
10	5		61080	50051600
10	6	5310-01-079-9886	61080	50016700
10	7	5310-01-080-4987	61080	50023400

CROSS-REFERENCE INDEXES

FIG.	ITEM	FIGURE AND ITEM .NUMBER INDEX		PART NUMBER
		STOCK NUMBER	CAGEC	
10	8		61080	03766300
10	9		61080	03457800
10	10		61080	03066501
10	11		61080	03066401
10	12		61080	03492900
11	1		61080	50051300
11	2		61080	50001000
11	3		61080	03091500
11	4		61080	50023400
11	5		61080	50003500
11	6		61080	00313802
11	7		61080	00362004
11	8		61080	03208902
11	9	2815-01-265-1752	61080	00361801
11	10		61080	00736300
11	11	5330-01-077-3913	61080	50154100
11	12		61080	50001100
11	13		61080	03766300
11	14		61080	03061501
11	15		61080	03092500
11	16		61080	03173100
11	17		61080	03003700
11	18		61080	03022001
11	19		61080	03060002
11	20		61080	50022700
11	21		61080	00614201
11	22		61080	03430101
11	23		61080	00614301
11	24		61080	03430101
11	25		61080	50043700
11	26		61080	40081600
11	27		61080	03892600
11	28		61080	03477200
11	29	5330-01-074-1503	61080	03582100
11	29	5330-01-074-2105	61080	03581800
11	29	5330-01-074-2106	61080	03581900
11	29	5330-01-074-2107	61080	03582000
11	29	5330-01-074-2108	61080	03582200
11	29	5330-01-264-6291	61080	03770300
11	30		61080	03063901
11	31		61080	00902600
11	32		61080	03209002
11	33		61080	03185100
11	34		61080	03209101
11	35	5330-01-265-1925	61080	50258000
12	1	2815-01-265-1753	61080	00907601
12	2		61080	03171910
12	3		61080	03060501
12	4		61080	03208100
12	5		61080	03208400
12	6		61080	03208001

CROSS-REFERENCE INDEXES

FIG.	ITEM	FIGURE AND ITEM .NUMBER INDEX		PART NUMBER
		STOCK NUMBER	CAGEC	
12	7		61080	03569820
12	8		61080	50023800
12	9		61080	03061100
12	10		61080	50042600
12	11		61080	03063800
12	12		61080	50154200
12	13		61080	00746800
12	14		61080	50034600
12	15		61080	03173401
12	16	5330-01-265-1926	61080	50154300
12	17		61080	50034100
12	18		61080	03570600
12	19		61080	00740121
12	20		61080	03753800
12	21		61080	50035700
12	22		61080	03208210
12	23		61080	50022700
12	24	3910-01-079-8052	61080	03447300
12	25	5307-01-070-9174	61080	50111000
12	26		61080	50037800
12	27	5307-01-071-1326	61080	50037200
13	1	2815-01-265-1754	61080	00912700
13	2		61080	03583300
13	3		61080	00904100
13	4	2815-01-068-3790	61080	00904300
13	5	5365-01-070-2325	61080	50020600
13	6		61080	50107500
14	1		61080	00361300
14	2		61080	03206900
14	3		61080	03393700
14	4	3120-01-080-3018	61080	03206700
15	1		61080	50053800
15	2	5306-01-074-6815	61080	50029200
15	3		61080	50001000
15	4		61080	00362310
15	5	3120-01-265-1945	61080	40032900
15	6		61080	40033700
15	7		61080	03612400
15	8		61080	50012900
15	9	5330-01-074-1504	61080	03209202
15	10		61080	40037900
15	11		61080	03278000
15	12		61080	50062200
15	13		61080	03209300
15	14		61080	50017900
15	15		61080	03430000
16	1		61080	03059700
16	2		61080	03063401
16	3		61080	03063301
16	4		61080	03169800
16	5		61080	40036800

CROSS-REFERENCE INDEXES

FIG.	ITEM	FIGURE AND ITEM .NUMBER INDEX		PART NUMBER
		STOCK NUMBER	CAGEC	
16	6		61080	50023500
16	7		61080	03206100
16	8		61080	03146200
16	9		61080	00427303
16	10		61080	50003600
16	11		61080	40022300
16	12		61080	50004200
16	13		61080	50022700
16	14		61080	50034900
16	15		61080	50034300
16	16		61080	00308704
16	17		61080	03205703
17	1		61080	50056200
17	2		61080	50061600
17	3		61080	03907100
17	4		61080	50054500
17	5	5310-01-080-4999	61080	50002900
17	6		61080	03063201
17	7		61080	40035600
17	8		61080	40027800
17	9		61080	00635000
17	10		61080	50025500
17	11		61080	03205901
17	12		61080	00563001
17	13	5330-01-070-6701	61080	40034200
17	14	5330-01-079-9960	61080	50154000
18	1		61080	03064801
18	2		61080	03004501
18	3		61080	00742000
18	4		61080	03170001
18	5		61080	50010000
18	6		61080	03006602
18	7		61080	03206600
18	8		61080	50047700
18	9		61080	50036200
18	10		61080	50011100
18	11		61080	00361202
18	12		61080	03195000
18	13		61080	50051800
18	14		61080	03060901
18	15		61080	50047100
19	1	6680-01-264-6338	61080	00308802
19	2		61080	40022000
19	3		61080	00632101
19	4	5330-01-070-7136	61080	50153800
19	5		61080	50029200
19	6		61080	50002900
19	7		61080	03207701
19	8		61080	03207600
19	9		61080	00362400
19	10		61080	50024600

CROSS-REFERENCE INDEXES

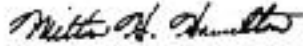
FIG.	ITEM	FIGURE AND ITEM .NUMBER INDEX		PART NUMBER
		STOCK NUMBER	CAGEC	
19	11		61080	40022800
19	12		61080	03205800
19	13		61080	50022900
19	14		61080	03104901
19	15		61080	40021700
19	16		61080	03060403
19	17		61080	40039701
19	18		61080	50062100
19	19		61080	03169300
19	20		61080	03169103
19	21		61080	50001500
19	22		61080	40002500
19	23		61080	03639600
19	24		61080	50050400
19	25		61080	03206200
19	26		61080	03205602
19	27		61080	40023800
19	28		61080	50054100
19	29		61080	50002900
19	30		61080	03897400
19	31		61080	03611800
19	32		61080	50037300
20	1		96906	MS20600ADW4
20	2		13646	117.000.526
20	3		96906	MS21318-27
20	4		13646	117.000.549
20	5		96906	MS51967-14
20	6		96906	MS35338-29
20	7		96906	MS90725-116
20	8		88044	AN960-7
20	9		76005	CB-1121-2
20	10		96906	MS35425
20	11		96906	MS51967-8
20	12		96906	MS35291-64
20	13	6150-01-197-6335	97403	13220E1127
20	14		13646	119.000.473
21	1		61080	60311400
21	2	5120-01-265-1966	61080	60382300
21	3	5120-01-265-1971	61080	61830600
21	4	5120-01-265-1803	61080	60458100
21	5	5210-01-265-1804	61080	60462800
21	6	5210-01-269-2717	61080	61208700
21	7	5120-01-265-1918	61080	66833500
21	8	5120-01-265-1805	61080	61209000
21	9	5120-01-102-1670	61080	61209100
21	10	5120-01-265-1806	61080	61209500
21	11		61080	612099
21	12	4940-01-266-0711	61080	61210300
21	13	5315-01-266-0712	61080	61210400
21	14	5110-01-265-1934	61080	61210700
21	15	5340-01-265-1808	61080	61275200

CROSS-REFERENCE INDEXES

FIG.	ITEM	FIGURE AND ITEM .NUMBER INDEX		PART NUMBER
		STOCK NUMBER	CAGEC	
21	16	5120-01-265-2015	61080	61495700
21	17	5120-01-265-1967	61080	61816800
21	18	5120-01-265-1809	61080	61830500
21	19	5120-01-265-1810	61080	66606700
21	20	5120-01-265-1811	61080	66606800
21	21	5120-01-265-1812	61080	66606900
21	22	5120-01-265-1813	61080	66607400
21	23	5120-01-265-1814	61080	66607500
21	24	5120-01-265-1968	61080	66632400
21	25	5120-01-265-1969	61080	66632701
21	26	5120-01-265-1815	61080	66634600
21	27	5120-01-265-1816	61080	66641800
21	28	5120-01-265-1817	61080	66642500
21	29	5120-01-265-1818	61080	66838300
21	30	5120-01-265-1819	61080	66934700
21	31	5120-01-265-1820	61080	67032300

By Order of the Secretary of the Army

Official



MILTON H HAMILTON
*Administrative Assistant to the
Secretary of the Army*
04087

GORDON R SULLIVAN
*General, United States Army
Chief of Staff*

DISTRIBUTION:

To be distributed in accordance with DA Form 12-25-E, block no. 6044, requirements for TM10-4320-310-24P.

The Metric System and Equivalents

Linear Measure

1 centimeter = 10 millimeters = .39 inch
 1 decimeter = 10 centimeters = 3.94 inches
 1 meter = 10 decimeters = 39.37 inches
 1 dekameter = 10 meters = 32.8 feet
 1 hectometer = 10 dekameters = 328.08 feet
 1 kilometer = 10 hectometers = 3,280.8 feet

Weights

1 centigram = 10 milligrams = .15 grain
 1 decigram = 10 centigrams = 1.54 grains
 1 gram = 10 decigrams = .035 ounce
 1 decagram = 10 grams = .35 ounce
 1 hectogram = 10 decagrams = 3.52 ounces
 1 kilogram = 10 hectograms = 2.2 pounds
 1 quintal = 100 kilograms = 220.46 pounds
 1 metric ton = 10 quintals = 1.1 short tons

Liquid Measure

1 centiliter = 10 milliliters = .34 fl. ounce
 1 deciliter = 10 centiliters = 3.38 fl. ounces
 1 liter = 10 deciliters = 33.81 fl. ounces
 1 dekaliter = 10 liters = 2.64 gallons
 1 hectoliter = 10 dekaliters = 26.42 gallons
 1 kiloliter = 10 hectoliters = 264.18 gallons

Square Measure

1 sq. centimeter = 100 sq. millimeters = .155 sq. inch
 1 sq. decimeter = 100 sq. centimeters = 15.5 sq. inches
 1 sq. meter (centare) = 100 sq. decimeters = 10.76 sq. feet
 1 sq. dekameter (are) = 100 sq. meters = 1,076.4 sq. feet
 1 sq. hectometer (hectare) = 100 sq. dekameters = 2.47 acres
 1 sq. kilometer = 100 sq. hectometers = .386 sq. mile

Cubic Measure

1 cu. centimeter = 1000 cu. millimeters = .06 cu. inch
 1 cu. decimeter = 1000 cu. centimeters = 61.02 cu. inches
 1 cu. meter = 1000 cu. decimeters = 35.31 cu. feet


Approximate Conversion Factors

To change	To	Multiply by	To change	To	Multiply by
inches	centimeters	2.540	ounce-inches	Newton-meters	.007062
feet	meters	.305	centimeters	inches	.394
yards	meters	.914	meters	feet	3.280
miles	kilometers	1.609	meters	yards	1.094
square inches	square centimeters	6.451	kilometers	miles	.621
square feet	square meters	.093	square centimeters	square inches	.155
square yards	square meters	.836	square meters	square feet	10.764
square miles	square kilometers	2.590	square meters	square yards	1.196
acres	square hectometers	.405	square kilometers	square miles	.386
cubic feet	cubic meters	.028	square hectometers	acres	2.471
cubic yards	cubic meters	.765	cubic meters	cubic feet	35.315
fluid ounces	milliliters	29.573	cubic meters	cubic yards	1.308
pints	liters	.473	milliliters	fluid ounces	.034
quarts	liters	.946	liters	pints	2.113
gallons	liters	3.785	liters	quarts	1.057
ounces	grams	28.349	liters	gallons	.264
pounds	kilograms	.454	grams	ounces	.035
short tons	metric tons	.907	kilograms	pounds	2.205
pound-feet	Newton-meters	1.356	metric tons	short tons	1.102
pound-inches	Newton-meters	.11296			

Temperature (Exact)

°F	Fahrenheit temperature	5/9 (after subtracting 32)	Celsius temperature	°C
----	------------------------	----------------------------	---------------------	----

RECOMMENDED CHANGES TO EQUIPMENT TECHNICAL PUBLICATIONS

		SOMETHING WRONG WITH PUBLICATION	
		FROM: (PRINT YOUR UNIT'S COMPLETE ADDRESS)	
		DATE SENT	
PUBLICATION NUMBER		PUBLICATION DATE	PUBLICATION TITLE
BE EXACT PIN-POINT WHERE IT IS			
PAGE NO.	PARA-GRAPH	FIGURE NO.	TABLE NO.
<div style="text-align: center; font-weight: bold; margin-bottom: 20px;"> IN THIS SPACE, TELL WHAT IS WRONG AND WHAT SHOULD BE DONE ABOUT IT. </div>			
PRINTED NAME, GRADE OR TITLE AND TELEPHONE NUMBER			SIGN HERE

